

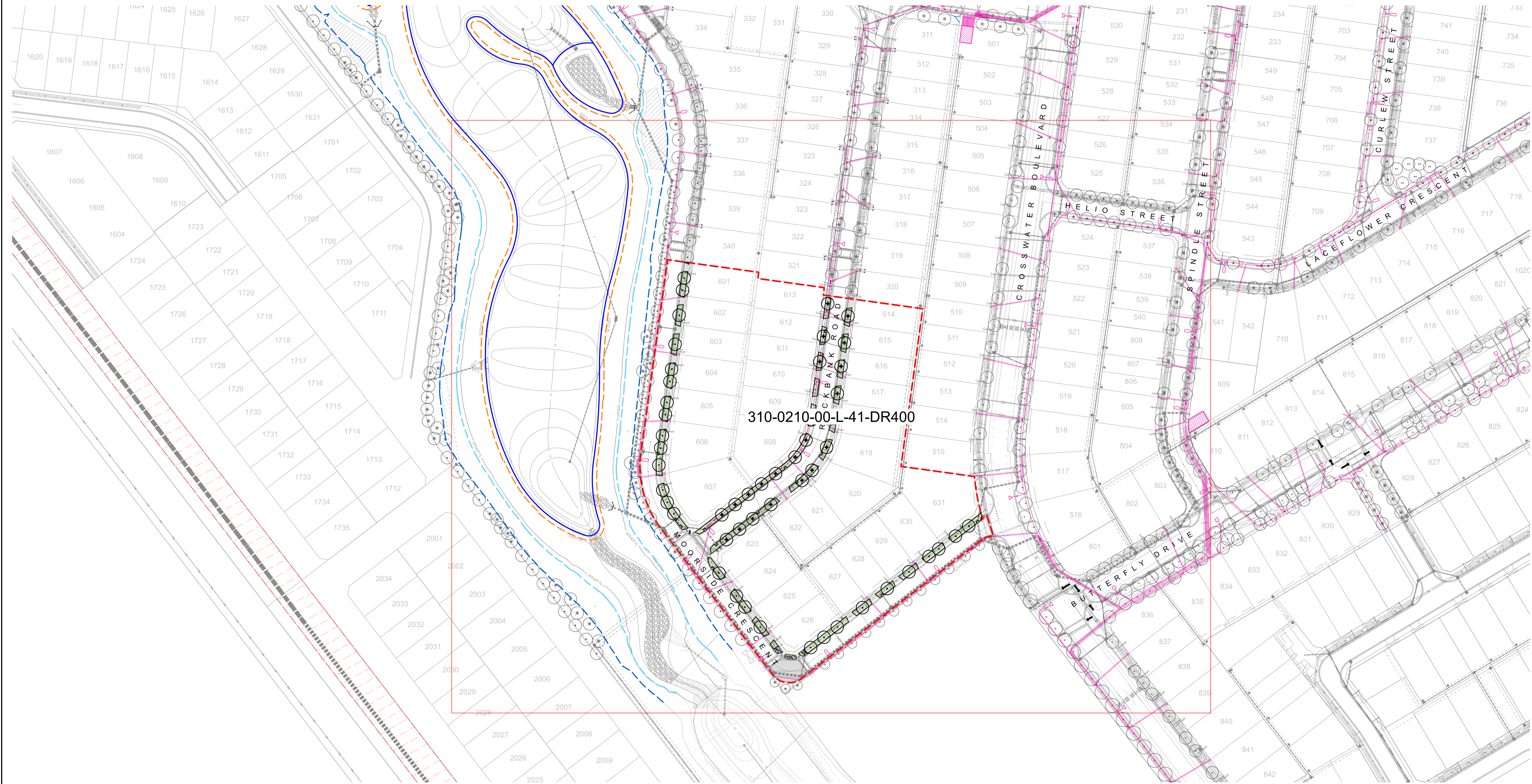
BERWICK WATERS

HONOUR VILLAGE - STAGE 6 STREETScape

DRAWING SCHEDULE

310-210-00-L-41-DR100	COVER SHEET/ DRAWINGS SHEDULE / KEYPLAN	1:1000
310-210-00-L-41-DR101	LEGEND / PLANT SCHEDULE	
310-210-00-L-41-DR400	LANDSCAPE PLAN	1:500
310-210-00-L-41-DR401	THRESHOLD LANDSCAPE PLAN	1:100
310-210-00-L-41-DR402	THRESHOLD LANDSCAPE PLAN	1:100
310-210-00-L-41-DR610	SOFTSCAPE DETAILS	AS SHOWN

KEY PLAN
SCALE 1:7500



310-0210-00-L-41-DR400

GENERAL NOTES

- DO NOT SCALE DRAWINGS. FIGURED DIMENSIONS HAVE PREFERENCE OVER SCALED DIMENSIONS.
- ANY DISCREPANCIES MUST BE REPORTED IMMEDIATELY TO THE SUPERINTENDENT.
- THESE DRAWINGS ARE TO BE READ IN CONJUNCTION WITH THE DETAILS, SPECIFICATIONS AND ENGINEERING DOCUMENTS.
- LOCATE AND PROTECT ALL UNDERGROUND SERVICES PRIOR TO ANY EXCAVATION. MAKE GOOD ALL DAMAGE TO EXISTING WORKS CAUSED BY THE ACTIVITY OF THESE WORKS.
- THESE DRAWINGS ARE TO BE PRINTED IN COLOUR

These designs, plans and specifications and the copyright therein are the property of TRACT CONSULTANTS PTY. LTD. and must not be used, reproduced or copied, wholly or in part, without the written permission of TRACT CONSULTANTS PTY. LTD.

TREE PLANTING NOTES:

- THE PLACEMENT OF THE STREET TREES MEETS AUSNET'S TREE PLANTING REQUIREMENTS NEAR UNDERGROUND CABLES' AND VESI'S URBAN RESIDENTIAL DEVELOPMENT (URD) DESIGN & CONSTRUCTION STANDARD TO ENSURE THAT TREES DO NOT ENCRUCH ON SERVICES.
- STREET TREES ARE TO BE PLANTED NO CLOSER THAN:
- 2.5m FROM HV & LV UNDERGROUND CABLE JOINTS
 - 2.5m FROM SPARE OR FUTURE USE CONDUIT ENDS
 - 2.5m FROM PARALLEL OR DISTRIBUTION PILLARS AND SWITCHING CABINETS
 - 1.5m FROM FOOTPATHS
 - 1.25m FROM THE BACK OF KERB
 - 3.0m FROM DRIVEWAYS
 - 4.0m FROM LIGHT POLES AND POWER POLES
 - 2.0m FROM SERVICE PITS
 - 1.5m ON EITHER SIDE FROM THE SERVICE INDICATOR ON THE FRONT OF THE KERB
 - 6.0m FROM INTERSECTIONS
 - 2.0m FROM STORMWATER PITS
 - 3.0m FROM FIRE PLUGS
 - 5.0m FROM COUNCIL RESERVE ADJOINING PROPERTIES
- TREES TO BE BEHIND SPLAY FOR CORNER BLOCKS.
- TREES TO BE POSITIONED CENTRALLY WITHIN NATURESTRIPS
- CONTRACTOR IS TO NOTIFY SUPERINTENDENT PRIOR TO DELETING ANY TREES DUE TO SERVICE INFRASTRUCTURE LOCATIONS.
- FINAL TREE PLACEMENT TO BE DETERMINED ON SITE WITH COUNCIL AT PRE-COMMENCEMENT MEETING.



CITY OF CASEY
PARKS & RESERVES
APPROVED
DATE: 24/01/2023

PRELIMINARY NOT FOR CONSTRUCTION

REV	DESCRIPTION	DATE	DRN	CHKD
1	COUNCIL ISSUE	09.11.22	T.M	E.B
2	COUNCIL COMMENTS	17.01.23	T.M	N.D

Tract
Landscape Architects
Urban Designers
Town Planners

Melbourne P: 03 9429 6133
Brisbane P: 07 3005 6400
Sydney P: 02 9954 3733
Geelong P: 03 5221 0105
Adelaide P: 08 8223 1324

www.tract.com.au

PROJECT
BERWICK WATERS
HONOUR VILLAGE

CLIENT
FRASERS PROPERTY AUSTRALIA

DRAWING TITLE
STAGE 6 STREETScape
COVER SHEET
DRAWING SCHEDULE / KEY PLAN

DRAWING NUMBER	REVISION
310-0210-00-L-40-DR100	2

DRAWN	CHECKED	APPROVED	DATE
T.M	E.B	J.G	05.05.2022

SCALE
1:1000 A1

LEGEND

GENERAL

- LIMIT OF WORKS
- PROPOSED TREES TO ADJOINING STAGES SHOWN AS INDICATIVE ONLY REFER TO EACH PACKAGE FOR FURTHER DETAIL

SOFTWORKS

- G2 - HYDROSEEDING TURF REFER TO DETAIL (ALL GRASSED AREAS TO HAVE A MAX GRADE OF 1:6)
- GB - GARDEN BED PLANTING EXTENT TO BE 500mm MINIMUM CLEARANCE FROM CONCRETE FOOTPATHS

EDGING

- SE - STEEL EDGING REFER TO SPECIFICATION AND DETAIL

STREET TREE PLANTING

- 45 LITRE
- EUCALYPTUS VIMINALIS Subsp. PRYORIANA Gippsland Manna Gum
- ACER BUERGERIANUM Trident Maple

SHRUBS / GRASSES / GROUNDCOVERS

- DIANELLA CAERULEA 'LITTLE JESS' Native Flax
- LOMANDRA LONGIFOLIA 'TANIKA' Tanika Mat Rush

5
600

2-4
600

6
600

1
600

2-4
600

PLANTING SCHEDULE

CODE	BOTANIC NAME	COMMON NAME	NATIVE/EXOTIC	MATURE SIZE (H x W)	DENSITY	INSTALL SIZE	QTY
TREES - 45 LITRE							
	<i>Acer buergerianum</i>	Trident Maple	Exotic	10 x 5m	as shown	45Lt / 2m (H) / 30mm Cal	23
	<i>Eucalyptus sideroxylon 'rosae'</i>	Red Flowering Gum	Indigenous	15 x 10m	as shown	45Lt / 2m (H) / 30mm Cal	27
Total							50
SHRUBS / GRASSES / GROUNDCOVERS							
DcLJ	<i>Dianella caerulea 'little jess'</i>	Native flax	Native	0.4 x 0.4m	6/m ²	140mm	41
LIT	<i>Lomandra longifolia 'Tanika'</i>	Tanika Mat Rush	Native	0.5 x 0.6m	4/m ²	140mm	28
Total							67

MATERIAL SCHEDULE

(NOTE: ALL ROAD THRESHOLD SURFACES HIGHLIGHTED BELOW ARE CONSTRUCTED BY CIVIL)

Note: Final Pavement types/specification to be confirmed prior to construction. Pavement samples to be provided for approval by the landscape architect. The materials schedule below does outline the nominated mixes. All highlighted rows are to be constructed by civil.

Code	Item	Description	Product	Finish	Supplier	Image	Detail
P1B	Pavement - Type 1 Exposed Plain Grey Concrete (Vehicular Grade)	Typical Portland Grey Oxide to Match Adjacent kerbing (by civil) Finish - Smooth finish to match appearance of existing curb	Reinforced Concrete (Refer to Engineers Drawings)	To Comply with VicRoad Specification			REFER TO CIVIL PACKAGE FOR CONSTRUCTION DETAILS. CONSTRUCTED BY CIVIL.
P2B	Pavement - Type 2 Exposed Dark Grey Concrete (Vehicular Grade)	Concrete Colour Systems Pigment - CCS Blue Gum 5% TBC Aggregate - 'Catara Mix' 80% Bluestone 20% Golden Beach with Dark grey oxide to concrete. (NO Trowel Finish to Edge of Slab)	Reinforced Concrete (Refer to Engineers Drawings)	To Comply with VicRoad Specification	Sample to be provided for superintendent approval prior to install. 1m x 1m laid panel of each different concrete type specified.		REFER TO CIVIL PACKAGE FOR CONSTRUCTION DETAILS. CONSTRUCTED BY CIVIL.
P3B	Pavement - Type 3 Exposed Beige Concrete (Vehicular Grade)	Concrete Colour Systems Pigment - CCS Canvas 5% TBC Aggregate - Golden Beach (100%) stone-size TBC (NO Trowel Finish to Edge of Slab)	Reinforced Concrete (Refer to Engineers Drawings)	To Comply with VicRoad Specification			REFER TO CIVIL PACKAGE FOR CONSTRUCTION DETAILS. CONSTRUCTED BY CIVIL.

GENERAL NOTES

- DO NOT SCALE DRAWINGS. FIGURED DIMENSIONS HAVE PREFERENCE OVER SCALED DIMENSIONS.
- ANY DISCREPANCIES MUST BE REPORTED IMMEDIATELY TO THE SUPERINTENDENT.
- THESE DRAWINGS ARE TO BE READ IN CONJUNCTION WITH THE DETAILS, SPECIFICATIONS AND ENGINEERING DOCUMENTS.
- LOCATE AND PROTECT ALL UNDERGROUND SERVICES PRIOR TO ANY EXCAVATION. MAKE GOOD ALL DAMAGE TO EXISTING WORKS CAUSED BY THE ACTIVITY OF THESE WORKS.
- THESE DRAWINGS ARE TO BE PRINTED IN COLOUR

These designs, plans and specifications and the copyright therein are the property of TRACT CONSULTANTS PTY. LTD. and must not be used, reproduced or copied, wholly or in part, without the written permission of TRACT CONSULTANTS PTY. LTD.

TREE PLANTING NOTES:

THE PLACEMENT OF THE STREET TREES MEETS AUSNET'S TREE PLANTING REQUIREMENTS NEAR UNDERGROUND CABLES AND VES'S URBAN RESIDENTIAL DEVELOPMENT (URD) DESIGN & CONSTRUCTION STANDARD TO ENSURE THAT TREES DO NOT ENCROACH ON SERVICES.

STREET TREES ARE TO BE PLANTED NO CLOSER THAN:

- 2.5m FROM HV & LV UNDERGROUND CABLE JOINTS
- 2.5m FROM SPARE OR FUTURE USE CONDUIT ENDS
- 2.5m FROM PARALLEL OR DISTRIBUTION PILLARS AND SWITCHING CABINETS
- 1.5m FROM FOOTPATHS
- 1.25m FROM THE BACK OF KERB
- 3.0m FROM DRIVEWAYS
- 4.0m FROM LIGHT POLES AND POWER POLES
- 2.0m FROM SERVICE PITS
- 1.5m ON EITHER SIDE FROM THE SERVICE INDICATOR ON THE FRONT OF THE KERB
- 6.0m FROM INTERSECTIONS
- 2.0m FROM STORMWATER PITS
- 3.0m FROM FIRE PLUGS
- 5.0m FROM COUNCIL RESERVE ADJOINING PROPERTIES

TREES TO BE BEHIND SPLAY FOR CORNER BLOCKS.

TREES TO BE POSITIONED CENTRALLY WITHIN NATURE STRIPS

CONTRACTOR IS TO NOTIFY SUPERINTENDENT PRIOR TO DELETING ANY TREES DUE TO SERVICE INFRASTRUCTURE LOCATIONS.

FINAL TREE PLACEMENT TO BE DETERMINED ON SITE WITH COUNCIL AT PRE-COMMENCEMENT MEETING.



CITY OF CASEY
PARKS & RESERVES
APPROVED
DATE: 24/01/2023

PRELIMINARY NOT FOR CONSTRUCTION

REV	DESCRIPTION	DATE	DRN	CHKD
1	COUNCIL ISSUE	09.11.22	T.M	E.B
2	COUNCIL COMMENTS	17.01.23	T.M	N.D

Tract
Landscape Architects
Urban Designers
Town Planners

Melbourne P: 03 9429 6133
Brisbane P: 07 3002 6400
Sydney P: 02 9954 3733
Geelong P: 03 5221 0105
Adelaide P: 08 8223 1324
www.tract.com.au

PROJECT

BERWICK WATERS
HONOUR VILLAGE

CLIENT

FRASERS PROPERTY AUSTRALIA

DRAWING TITLE

STAGE 6 STREETScape
LEGEND
PLANT SCHEDULE

DRAWING NUMBER REVISION

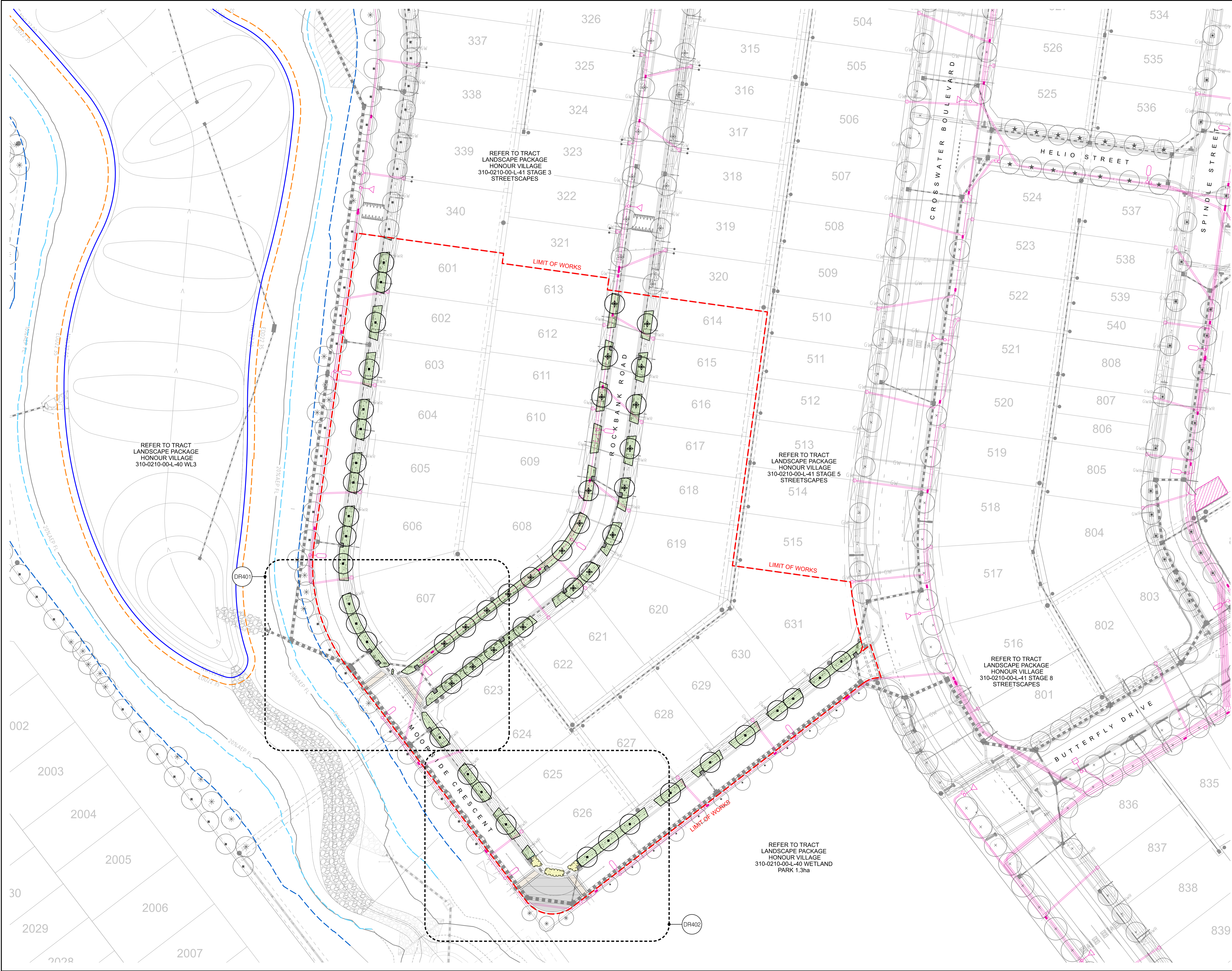
310-0210-00-L-40-DR101 2

DRAWN CHECKED APPROVED DATE

T.M E.B J.G 05.05.2022

SCALE

A1



GENERAL NOTES

- DO NOT SCALE DRAWINGS. FIGURED DIMENSIONS HAVE PREFERENCE OVER SCALED DIMENSIONS.
- ANY DISCREPANCIES MUST BE REPORTED IMMEDIATELY TO THE SUPERINTENDENT.
- THESE DRAWINGS ARE TO BE READ IN CONJUNCTION WITH THE DETAILS, SPECIFICATIONS AND ENGINEERING DOCUMENTS.
- LOCATE AND PROTECT ALL UNDERGROUND SERVICES PRIOR TO ANY EXCAVATION. MAKE GOOD ALL DAMAGE TO EXISTING WORKS CAUSED BY THE ACTIVITY OF THESE WORKS.
- THESE DRAWINGS ARE TO BE PRINTED IN COLOUR

These designs, plans and specifications and the copyright therein are the property of TRACT CONSULTANTS PTY. LTD. and must not be used, reproduced or copied, wholly or in part, without the written permission of TRACT CONSULTANTS PTY. LTD.

TREE PLANTING NOTES:

THE PLACEMENT OF THE STREET TREES MEETS AUSNET'S TREE PLANTING REQUIREMENTS NEAR UNDERGROUND CABLES AND VES'S 'URBAN RESIDENTIAL DEVELOPMENT (URD) DESIGN & CONSTRUCTION STANDARD' TO ENSURE THAT TREES DO NOT ENCROACH ON SERVICES.

STREET TREES ARE TO BE PLANTED NO CLOSER THAN:

- 2.5m FROM HV & LV UNDERGROUND CABLE JOINTS
- 2.5m FROM SPARE OR FUTURE USE CONDUIT ENDS AND SWITCHING CABINETS
- 2.5m FROM PARALLEL OR DISTRIBUTION PILLARS
- 1.5m FROM FOOTPATHS
- 1.25m FROM THE BACK OF KERB
- 3.0m FROM DRIVEWAYS
- 4.0m FROM LIGHT POLES AND POWER POLES
- 2.0m FROM SERVICE PITS
- 1.5m ON EITHER SIDE FROM THE SERVICE INDICATOR ON THE FRONT OF THE KERB
- 6.0m FROM INTERSECTIONS
- 2.0m FROM STORMWATER PITS
- 3.0m FROM FIRE PLUGS
- 5.0m FROM COUNCIL RESERVE ADJOINING PROPERTIES

TREES TO BE BEHIND SPLAY FOR CORNER BLOCKS.

TREES TO BE POSITIONED CENTRALLY WITHIN NATURESTRIPS

CONTRACTOR IS TO NOTIFY SUPERINTENDENT PRIOR TO DELETING ANY TREES DUE TO SERVICE INFRASTRUCTURE LOCATIONS.

FINAL TREE PLACEMENT TO BE DETERMINED ON SITE WITH COUNCIL AT PRE-COMMENCEMENT MEETING.



CITY OF CASEY
PARKS & RESERVES
APPROVED
DATE: 24/01/2023

**PRELIMINARY
NOT FOR CONSTRUCTION**

REV	DESCRIPTION	DATE	DRN	CHKD
1	COUNCIL ISSUE	09.11.22	T.M	E.B
2	COUNCIL COMMENTS	17.01.23	T.M	N.D

Tract
Landscape Architects
Urban Designers
Town Planners

Melbourne P: 03 9429 6133
Brisbane P: 07 3002 6400
Sydney P: 02 9954 3733
Geelong P: 03 5221 0105
Adelaide P: 08 8223 1324

www.tract.com.au

PROJECT
BERWICK WATERS
HONOUR VILLAGE

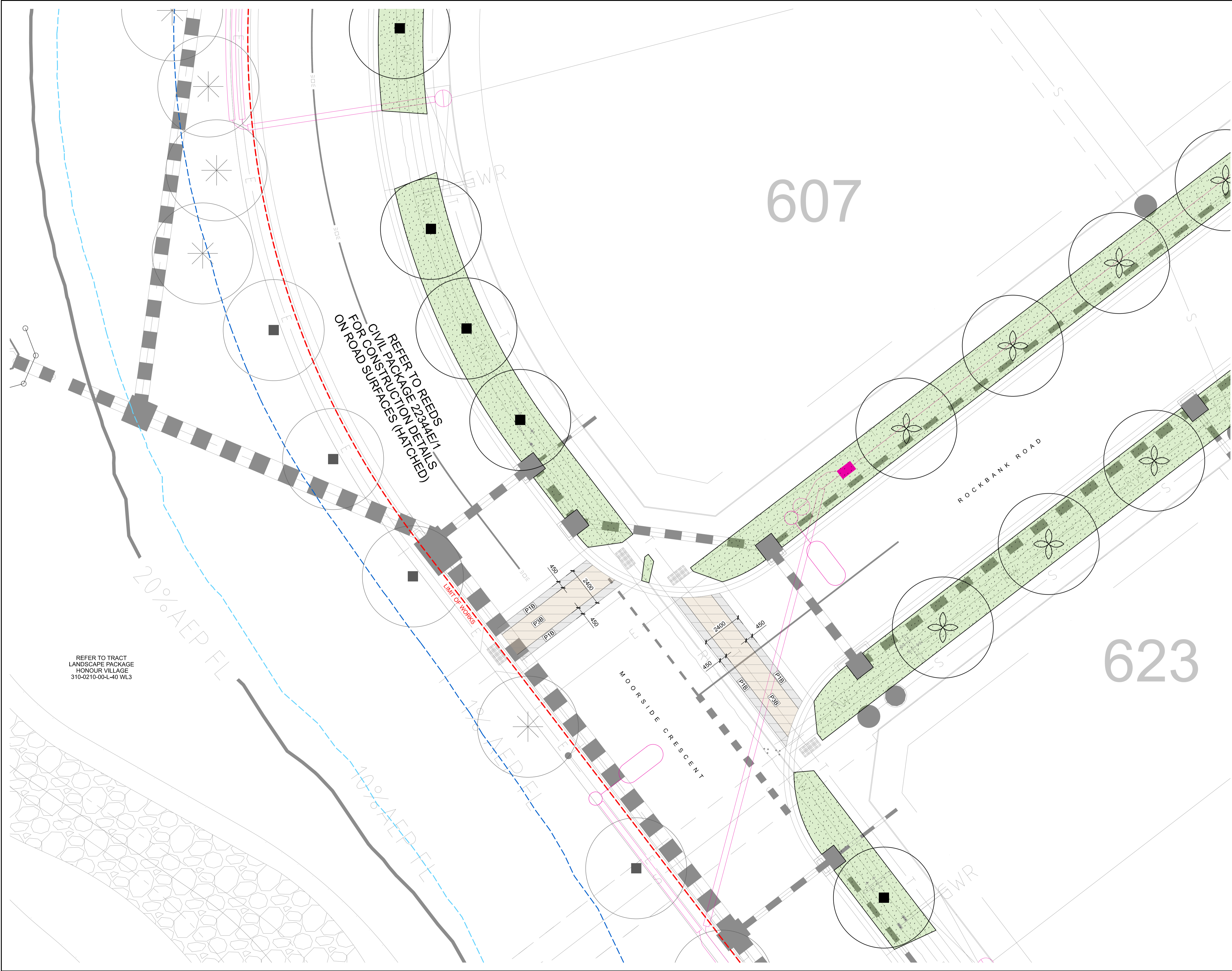
CLIENT
FRASERS PROPERTY AUSTRALIA

DRAWING TITLE
STAGE 6 STREETSCAPE
LANDSCAPE PLAN

DRAWING NUMBER 310-0210-00-L-40-DR400
REVISION 2

DRAWN T.M
CHECKED E.B
APPROVED J.G
DATE 05.05.2022

SCALE 1:500
A1



- GENERAL NOTES**
- DO NOT SCALE DRAWINGS. FIGURED DIMENSIONS HAVE PREFERENCE OVER SCALED DIMENSIONS.
 - ANY DISCREPANCIES MUST BE REPORTED IMMEDIATELY TO THE SUPERINTENDENT.
 - THESE DRAWINGS ARE TO BE READ IN CONJUNCTION WITH THE DETAILS, SPECIFICATIONS AND ENGINEERING DOCUMENTS.
 - LOCATE AND PROTECT ALL UNDERGROUND SERVICES PRIOR TO ANY EXCAVATION. MAKE GOOD ALL DAMAGE TO EXISTING WORKS CAUSED BY THE ACTIVITY OF THESE WORKS.
 - THESE DRAWINGS ARE TO BE PRINTED IN COLOUR
- These designs, plans and specifications and the copyright therein are the property of TRACT CONSULTANTS PTY. LTD. and must not be used, reproduced or copied, wholly or in part, without the written permission of TRACT CONSULTANTS PTY. LTD.

- TREE PLANTING NOTES:**
- THE PLACEMENT OF THE STREET TREES MEETS AUSNET'S TREE PLANTING REQUIREMENTS NEAR UNDERGROUND CABLES' AND VESIS' URBAN RESIDENTIAL DEVELOPMENT (URD) DESIGN & CONSTRUCTION STANDARD TO ENSURE THAT TREES DO NOT ENCRoACH ON SERVICES.
- STREET TREES ARE TO BE PLANTED NO CLOSER THAN:
- 2.5m FROM HV & LV UNDERGROUND CABLE JOINTS
 - 2.5m FROM SPARE OR FUTURE USE CONDUIT ENDS
 - 2.5m FROM PARALLEL OR DISTRIBUTION PILLARS AND SWITCHING CABINETS
 - 2.5m FROM SUBSTATIONS
 - 1.5m FROM FOOTPATHS
 - 1.25m FROM THE BACK OF KERB
 - 3.0m FROM DRIVEWAYS
 - 4.0m FROM LIGHT POLES AND POWER POLES
 - 2.0m FROM SERVICE PITS
 - 1.5m ON EITHER SIDE FROM THE SERVICE INDICATOR ON THE FRONT OF THE KERB
 - 6.0m FROM INTERSECTIONS
 - 2.0m FROM STORMWATER PITS
 - 3.0m FROM FIRE PUGS
 - 5.0m FROM COUNCIL RESERVE ADJOINING PROPERTIES
- TREES TO BE BEHIND SPLAY FOR CORNER BLOCKS.
TREES TO BE POSITIONED CENTRALLY WITHIN NATURESTRIPS
- CONTRACTOR IS TO NOTIFY SUPERINTENDENT PRIOR TO DELETING ANY TREES DUE TO SERVICE INFRASTRUCTURE LOCATIONS.
- FINAL TREE PLACEMENT TO BE DETERMINED ON SITE WITH COUNCIL AT PRE-COMMENCEMENT MEETING.



CITY OF CASEY
PARKS & RESERVES
APPROVED
DATE: 24/01/2023

**PRELIMINARY
NOT FOR CONSTRUCTION**

REV	DESCRIPTION	DATE	DRN	CHKD
1	COUNCIL ISSUE	09.11.22	T.M	E.B
2	COUNCIL COMMENTS	17.01.23	T.M	N.D

Tract
Landscape Architects
Urban Designers
Town Planners

Melbourne P: 03 9429 6133
Brisbane P: 07 3002 6400
Sydney P: 02 9954 3733
Geelong P: 03 5221 0105
Adelaide P: 08 8223 1324

www.tract.com.au

PROJECT
BERWICK WATERS
HONOUR VILLAGE

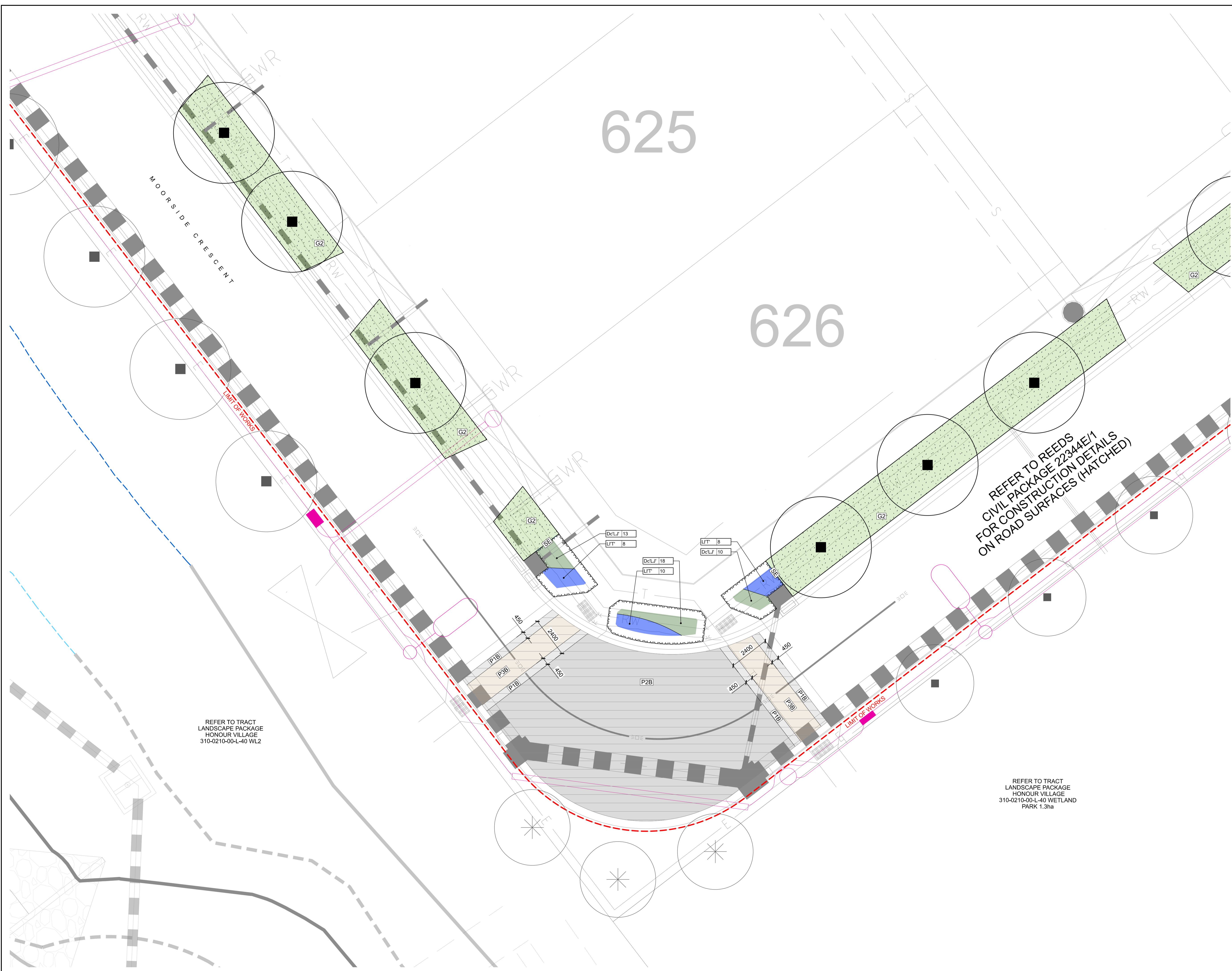
CLIENT
FRASERS PROPERTY AUSTRALIA

DRAWING TITLE
STAGE 6 STREETSCAPE
THRESHOLD LANDSCAPE PLAN

DRAWING NUMBER 310-0210-00-L-40-DR401
REVISION 2

DRAWN T.M
CHECKED E.B
APPROVED J.G
DATE 03.08.2022

SCALE 1:100
A1



- GENERAL NOTES**
- DO NOT SCALE DRAWINGS. FIGURED DIMENSIONS HAVE PREFERENCE OVER SCALED DIMENSIONS.
 - ANY DISCREPANCIES MUST BE REPORTED IMMEDIATELY TO THE SUPERINTENDENT.
 - THESE DRAWINGS ARE TO BE READ IN CONJUNCTION WITH THE DETAILS, SPECIFICATIONS AND ENGINEERING DOCUMENTS.
 - LOCATE AND PROTECT ALL UNDERGROUND SERVICES PRIOR TO ANY EXCAVATION. MAKE GOOD ALL DAMAGE TO EXISTING WORKS CAUSED BY THE ACTIVITY OF THESE WORKS.
 - THESE DRAWINGS ARE TO BE PRINTED IN COLOUR
- These designs, plans and specifications and the copyright therein are the property of TRACT CONSULTANTS PTY. LTD. and must not be used, reproduced or copied, wholly or in part, without the written permission of TRACT CONSULTANTS PTY. LTD.

- TREE PLANTING NOTES:**
- THE PLACEMENT OF THE STREET TREES MEETS AUSNET'S TREE PLANTING REQUIREMENTS NEAR UNDERGROUND CABLES' AND VESIS' 'URBAN RESIDENTIAL DEVELOPMENT (URD) DESIGN & CONSTRUCTION STANDARD' TO ENSURE THAT TREES DO NOT ENCRoACH ON SERVICES.
- STREET TREES ARE TO BE PLANTED NO CLOSER THAN:
- 2.5m FROM HV & LV UNDERGROUND CABLE JOINTS
 - 2.5m FROM SPARE OR FUTURE USE CONDUIT ENDS
 - 2.5m FROM PARALLEL OR DISTRIBUTION PILLARS AND SWITCHING CABINETS
 - 2.5m FROM SUBSTATIONS
 - 1.5m FROM FOOTPATHS
 - 1.25m FROM THE BACK OF KERB
 - 3.0m FROM DRIVEWAYS
 - 4.0m FROM LIGHT POLES AND POWER POLES
 - 2.0m FROM SERVICE PITS
 - 1.5m ON EITHER SIDE FROM THE SERVICE INDICATOR ON THE FRONT OF THE KERB
 - 6.0m FROM INTERSECTIONS
 - 2.0m FROM STORMWATER PITS
 - 3.0m FROM FIRE PLUGS
 - 5.0m FROM COUNCIL RESERVE ADJOINING PROPERTIES
- TREES TO BE BEHIND SPLAY FOR CORNER BLOCKS.
TREES TO BE POSITIONED CENTRALLY WITHIN NATURESTRIPS
- CONTRACTOR IS TO NOTIFY SUPERINTENDENT PRIOR TO DELETING ANY TREES DUE TO SERVICE INFRASTRUCTURE LOCATIONS.
- FINAL TREE PLACEMENT TO BE DETERMINED ON SITE WITH COUNCIL AT PRE-COMMENCEMENT MEETING.



**CITY OF CASEY
PARKS & RESERVES
APPROVED
DATE: 24/01/2023**

REFER TO REEDS CIVIL PACKAGE 22344E/1 FOR CONSTRUCTION DETAILS ON ROAD SURFACES (HATCHED)

REFER TO TRACT LANDSCAPE PACKAGE HONOUR VILLAGE 310-0210-00-L-40 WL2

REFER TO TRACT LANDSCAPE PACKAGE HONOUR VILLAGE 310-0210-00-L-40 WETLAND PARK 1.3ha

**PRELIMINARY
NOT FOR CONSTRUCTION**

REV	DESCRIPTION	DATE	DRN	CHKD
1	COUNCIL ISSUE	09.11.22	T.M	E.B
2	COUNCIL COMMENTS	17.01.23	T.M	N.D

Tract Landscape Architects Urban Designers Town Planners

Melbourne P: 03 9429 6133
Brisbane P: 07 3002 6400
Sydney P: 02 9954 3733
Geelong P: 03 5221 0105
Adelaide P: 08 8223 1324 www.tract.com.au

PROJECT
BERWICK WATERS
HONOUR VILLAGE

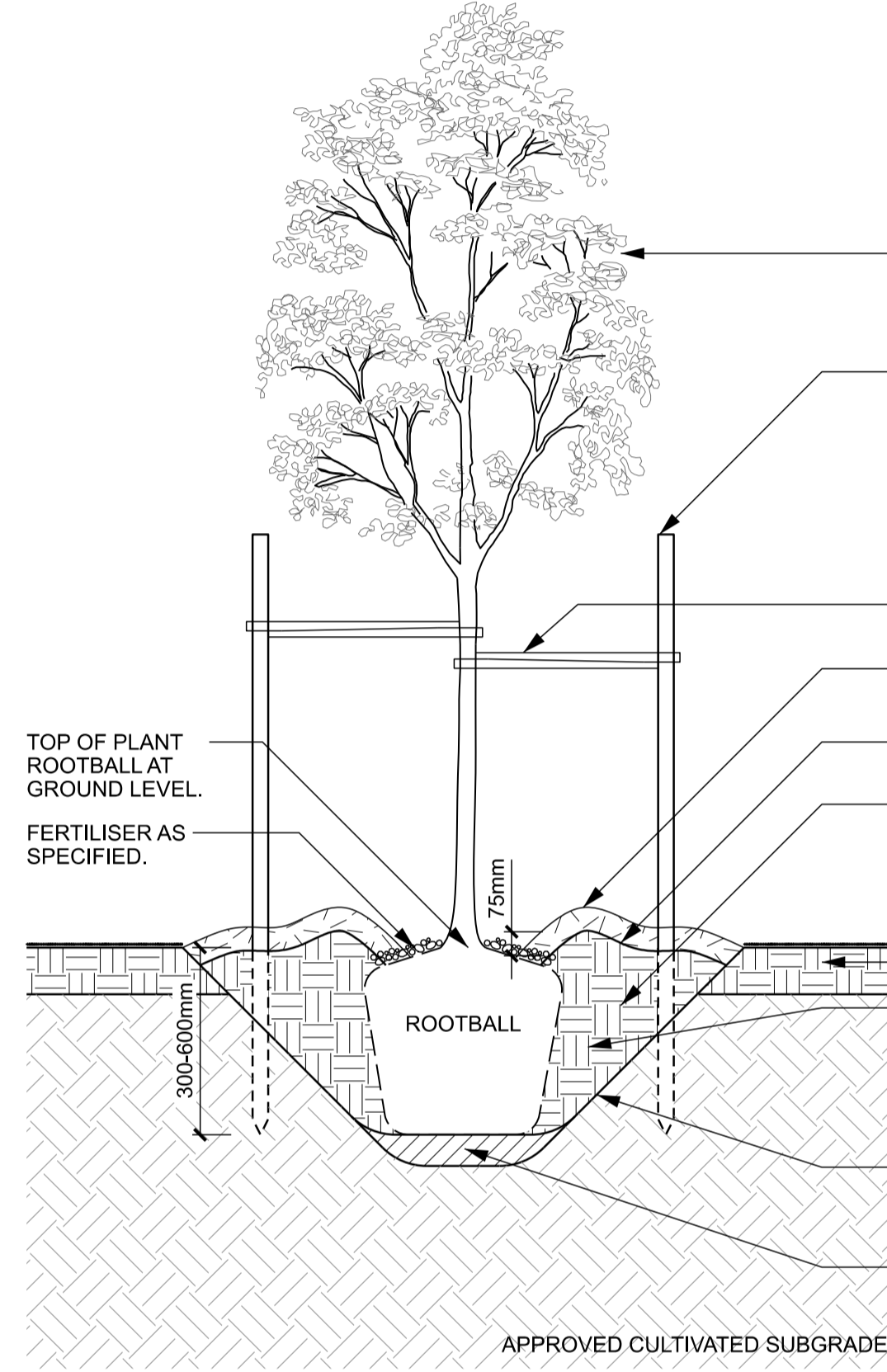
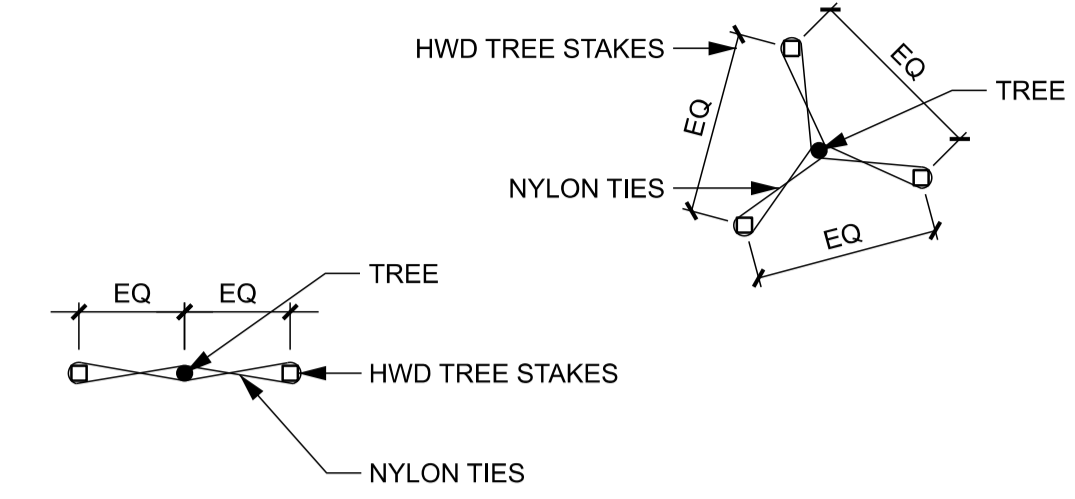
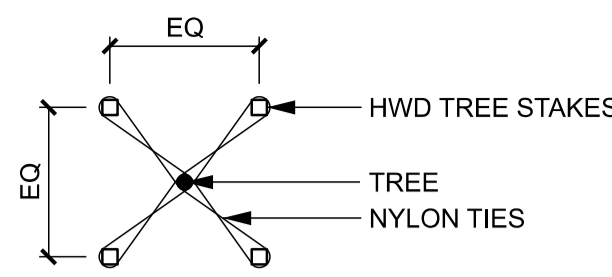
CLIENT
FRASERS PROPERTY AUSTRALIA

DRAWING TITLE
STAGE 6 STREETSCAPE
THRESHOLD LANDSCAPE PLAN

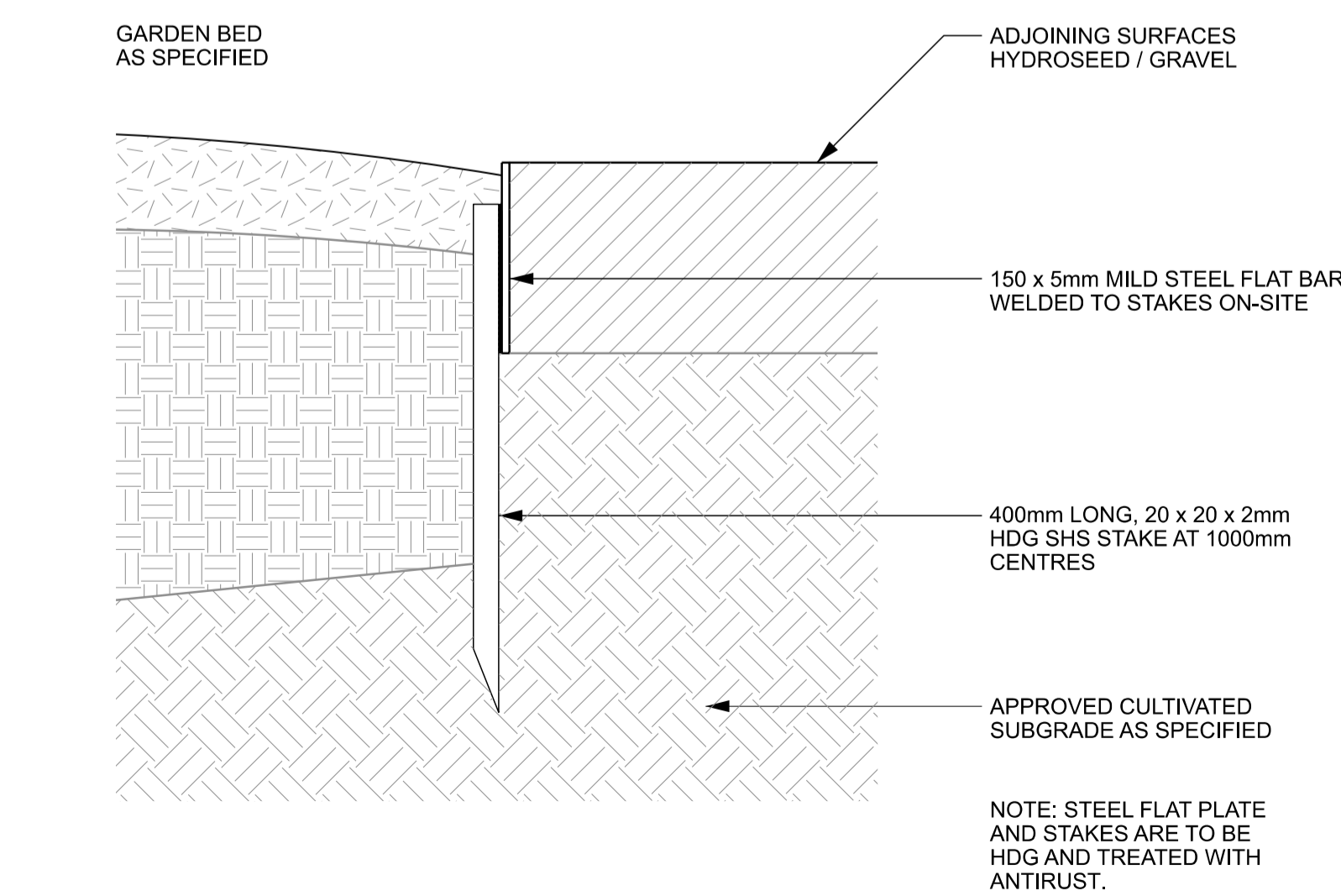
DRAWING NUMBER	REVISION
310-0210-00-L-40-DR402	2

DRAWN	CHECKED	APPROVED	DATE
T.M	E.B	J.G	03.08.2022

SCALE
1:100



1 ADVANCED TREE TYPICAL PLANTING DETAIL 1:20



6 SE - STEEL EDGE TYPICAL DETAIL 1:5

TREE STAKES:

SIZE	No:	Stakes Size (min)
a) 200L	4	75 x 75 x 2400mm
b) 100L	3	75 x 75 x 2400mm
c) 75L	3	75 x 75 x 2400mm
d) 45L	3	75 x 75 x 1800mm
e) 35L	3	75 x 75 x 1800mm

NOTES:

- TREES SHALL HAVE A WELL-DEVELOPED TAPER AND BE SELF-SUPPORTING IN BOTH ROOTBALL AND TRUNK.
- EACH TREE MUST DEMONSTRATE A SINGLE CENTRAL LEADER WITH A GOOD BRANCH STRUCTURE THROUGHOUT.
- ALL TREES MUST DEMONSTRATE GOOD HEALTH AND VIGOR WITH NO PEST OR DISEASE PRESENT.
- TREES SHALL SHOW NO SYMPTOMS OF STRESS OR DAMAGE.
- PLANTING HOLE TO BE WATERED PRIOR TO SETTING OF TREES, WATER TREE THOROUGHLY BEFORE AND IMMEDIATELY AFTER PLANTING.
- IT IS THE RESPONSIBILITY OF THE CONTRACTOR TO CONFIRM THE LOCATION OF ALL UNDERGROUND SERVICES PRIOR TO COMMENCEMENT OR ANY EXCAVATION OR STAKING WORKS.
- SITE TO BE LEFT CLEAN AND TIDY ON COMPLETION OF PLANTING. REMOVE WEEDS AND BUILDING SPOIL FROM PLANTING ZONE.
- IMPORTED SOILS MUST COMPLY WITH THE LATEST VERSION OF AS 4419 - SOILS FOR LANDSCAPING AND GARDEN USE

SPECIFIED TREE
TREES SHALL HAVE A WELL DEVELOPED TAPER AND BE SELF-SUPPORTING. TREES SHALL BE OF GOOD STRUCTURE AND HEALTH.

HWD TREE STAKES/GUARDS, PAINTED BLACK OFF SITE AS PER SPECIFICATION, STAKES MUST BE PLACED OUTSIDE OF ROOTBALL INTO VIRGIN GROUND TO AVOID DAMAGE TO ROOTBALL. STAKES TO BE UNIFORM IN HEIGHT.

NYLON TIES AS SPECIFIED FIXED TO STAKES. TIES ARE TO BE LOOSE FIT AND ALLOW FOR SAFE MOVEMENT OF TREE CANOPY. PLACED AT 300mm SPACINGS, NO GREATER THAN 1/2 THE HEIGHT AND TO BE IN ACCORDANCE WITH BEST PRACTICE HORTICULTURE STANDARDS.

75mm DEPTH BUSH MULCH, TO BE KEPT AWAY FROM TREE TRUNK.

FORM UP WATERING BASIN 100-150mm DEPTH. KEEP TOPSOIL AWAY FROM TREE TRUNK.

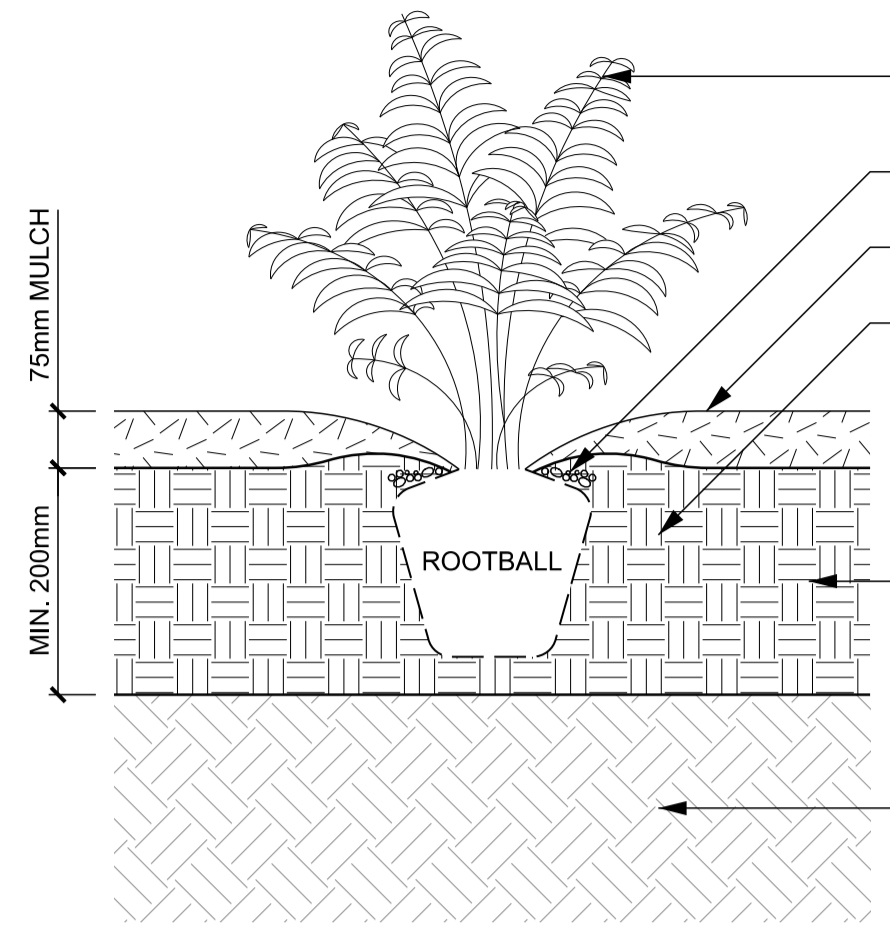
EXCAVATE A SLOPING SHALLOW HOLE 3 TIMES THE WIDTH OF ROOTBALL (MIN. 2 TIMES IF SPACE RESTRICTIONS), SLOPE SIDES AT 45°. FRACTURE BASE AND SIDES OF HOLE TO RELIEVE COMPACTION.

LAWN / GARDEN BED.

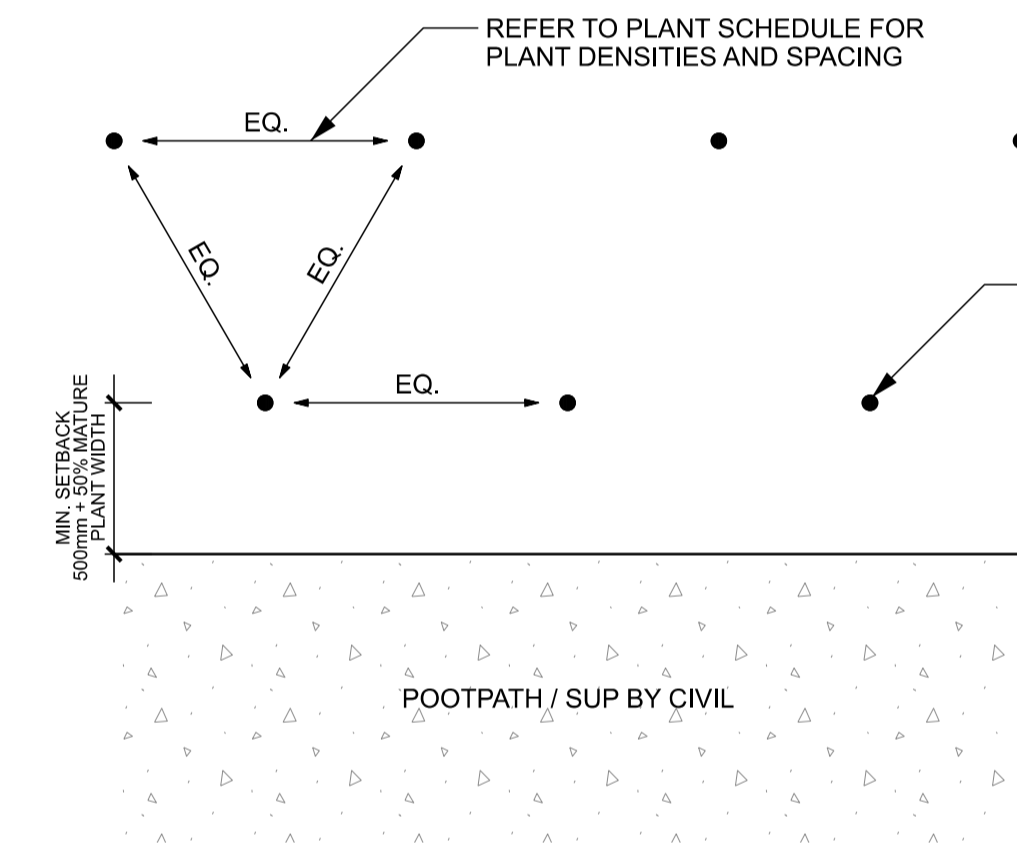
PLANTING HOLE SHALL BE FILLED TO 75% OF THE TOTAL PLANTING DEPTH BY WORKING IN WITH A SPADE, THEN SOIL LIGHTLY TAMPED AND WATERED. THE REMAINING 25% OF THE PLANTING HOLE SHOULD BE FILLED IN WITH SOIL, WATERED AND SETTLED TO THE FINAL PLANTING LEVEL.

FRACTURE SIDES AND BASE OF EXCAVATION TO 100mm. PLANTING HOLE SHALL BE WATERED TO THE SETTLING OF TREES.

PLANTING HOLE DEPTH SHALL BE 100mm BELOW THE DEPTH OF ROOTBALL AND BACKFILLED WITH LIGHTLY ORGANIC MATERIAL. WHERE WATER LOGGING MAY BE AN ISSUE, SUPERINTENDENT SHALL BE NOTIFIED PRIOR TO INSTALLATION.



2 SHRUB PLANTING TYPICAL DETAIL 1:10



4 PLANT SPACING TYPICAL DETAIL 1:5

NOTE:

- SHRUBS/GRASSES ARE TO BE PLANTED A MINIMUM OFFSET OF 500mm + 50% MATURE SIZE FROM PATH EDGES AS PER COUNCIL STANDARD.
- IMPORTED SOILS MUST COMPLY WITH THE LATEST VERSION OF AS4419 - SOILS FOR LANDSCAPING AND GARDEN USE

PLANT AS SPECIFIED, TO BE WATERED PRIOR TO, AND IMMEDIATELY AFTER PLANTING.

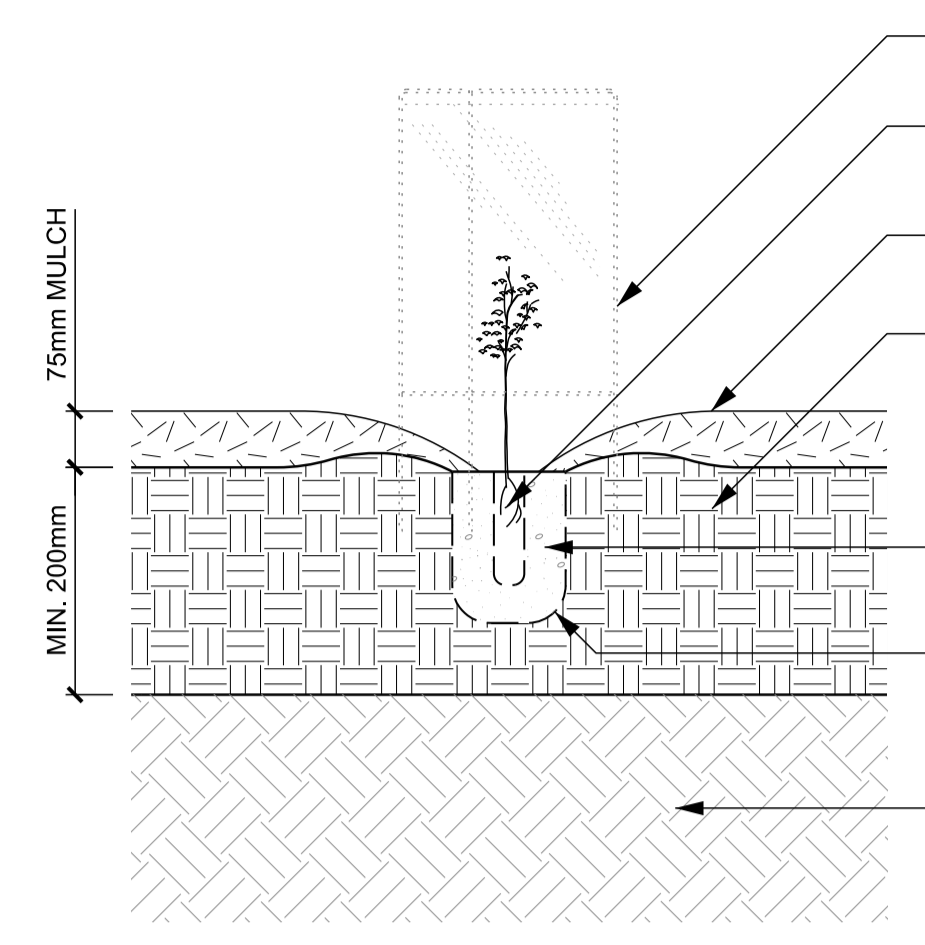
APPLY FERTILISER AS SPECIFIED, TO APPROVED RATES.

75mm DEPTH BUSH MULCH AS SPECIFIED, KEEP MULCH CLEAR OF BASE OF PLANT.

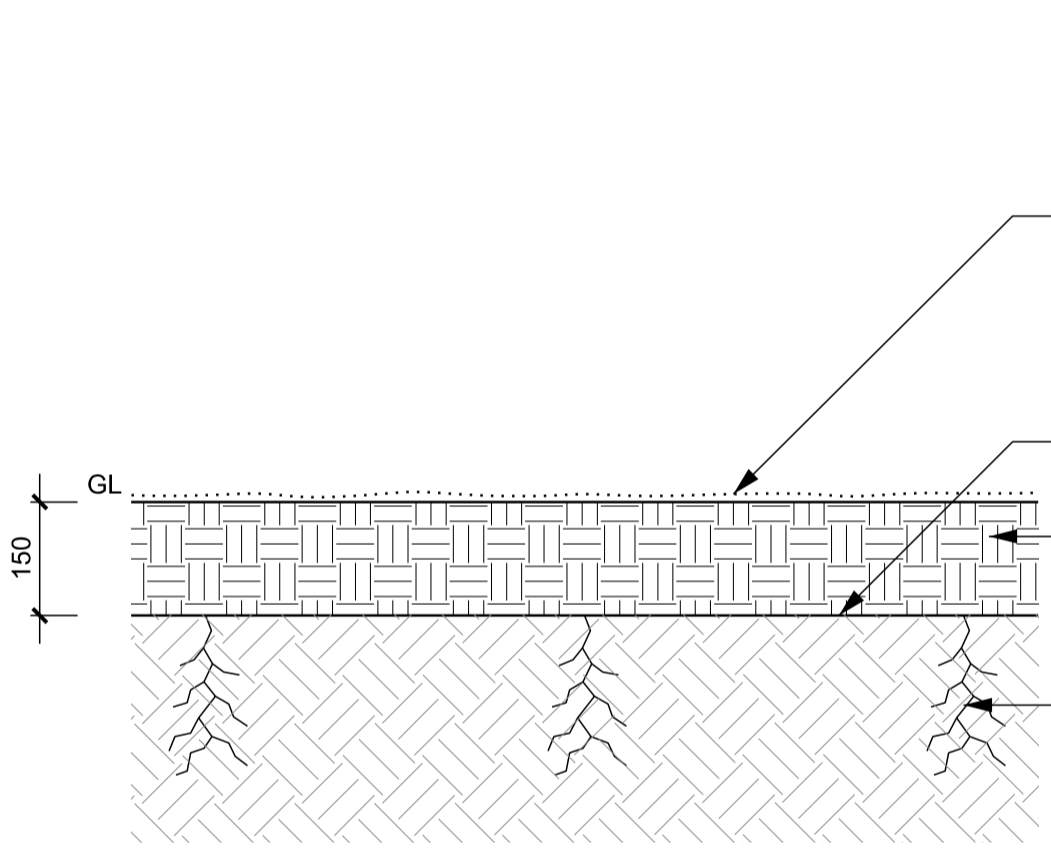
EXCAVATE HOLE TO 3 TIMES THE DIAMETER OF THE POT SIZE AND SLOPE ALL SIDES TO 45°. BACK FILL WITH APPROVED SOIL MIX AND HYDROCELL AS SPECIFIED, HOLE TO BE NO DEEPER THAN HEIGHT OF ROOTBALL.

200mm MIN. DEPTH OF APPROVED SITE OR IMPORTED TOPSOIL, AS SPECIFIED. AMELIORATE AS REQUIRED PROVIDE BASIN CAPABLE OF HOLDING 5L OF WATER.

CULTIVATE SUBGRADE AS SPECIFIED.



3 TUBESTOCK PLANTING TYPICAL DETAIL 1:10



5 HYDROSEEDING TURF TYPICAL DETAIL 1:10

NOTE:

- IMPORTED SOILS MUST COMPLY WITH THE LATEST VERSION OF AS4419 - SOILS FOR LANDSCAPING AND GARDEN USE

LAWN SEEDING MIX (BY WEIGHT)

- 10% - KIKUYU
- 60% - PERENNIAL RYEGRASS
- 20% - ITALIAN RYEGRASS
- 10% - CREEPING RED FESCUE

SEED RATE: 1KG/30m2

CULTIVATE SUBGRADE TO MIN. 150mm AS SPECIFIED

150mm MIN. DEPTH OF APPROVED SITE OR IMPORTED TOPSOIL, AS SPECIFIED. AMELIORATE AS REQUIRED PROVIDE BASIN CAPABLE OF HOLDING 5L OF WATER.

RIP LINES - MIN. 450mm DEEP AT 500mm SPACINGS AS SPECIFIED

GENERAL NOTES

- DO NOT SCALE DRAWINGS. FIGURED DIMENSIONS HAVE PREFERENCE OVER SCALED DIMENSIONS.
- ANY DISCREPANCIES MUST BE REPORTED IMMEDIATELY TO THE SUPERINTENDENT.
- THESE DRAWINGS ARE TO BE READ IN CONJUNCTION WITH THE DETAILS, SPECIFICATIONS AND ENGINEERING DOCUMENTS.
- LOCATE AND PROTECT ALL UNDERGROUND SERVICES PRIOR TO ANY EXCAVATION. MAKE GOOD ALL DAMAGE TO EXISTING WORKS CAUSED BY THE ACTIVITY OF THESE WORKS.
- THESE DRAWINGS ARE TO BE PRINTED IN COLOUR

These designs, plans and specifications and the copyright therein are the property of TRACT CONSULTANTS PTY. LTD. and must not be used, reproduced or copied, wholly or in part, without the written permission of TRACT CONSULTANTS PTY. LTD.

TREE PLANTING NOTES:

THE PLACEMENT OF THE STREET TREES MEETS AUSNET'S TREE PLANTING REQUIREMENTS NEAR UNDERGROUND CABLES' AND VESIS' 'URBAN RESIDENTIAL DEVELOPMENT (URD) DESIGN & CONSTRUCTION STANDARD' TO ENSURE THAT TREES DO NOT ENCROACH ON SERVICES.

STREET TREES ARE TO BE PLANTED NO CLOSER THAN:

- 2.5m FROM HV & LV UNDERGROUND CABLE JOINTS
- 2.5m FROM PARALLEL OR FUTURE USE CONDUIT ENDS AND SWITCHING CABINETS
- 2.5m FROM SUBSTATIONS
- 1.5m FROM FOOTPATHS
- 1.25m FROM THE BACK OF KERB
- 3.0m FROM DRIVEWAYS
- 4.0m FROM LIGHT POLES AND POWER POLES
- 2.0m FROM SERVICE PITS
- 1.5m ON EITHER SIDE FROM THE SERVICE INDICATOR ON THE FRONT OF THE KERB
- 6.0m FROM INTERSECTIONS
- 5.0m FROM STORMWATER PITS
- 3.0m FROM FIRE PLUGS
- 5.0m FROM COUNCIL RESERVE ADJOINING PROPERTIES

TREES TO BE BEHIND SPLAY FOR CORNER BLOCKS.

TREES TO BE POSITIONED CENTRALLY WITHIN NATURESTRIPS

CONTRACTOR IS TO NOTIFY SUPERINTENDENT PRIOR TO DELETING ANY TREES DUE TO SERVICE INFRASTRUCTURE LOCATIONS.

FINAL TREE PLACEMENT TO BE DETERMINED ON SITE WITH COUNCIL AT PRE-COMMENCEMENT MEETING.



**CITY OF CASEY
PARKS & RESERVES
APPROVED
DATE: 24/01/2023**

**PRELIMINARY
NOT FOR CONSTRUCTION**

REV	DESCRIPTION	DATE	DRN	CHKD
1	COUNCIL ISSUE	09.11.22	T.M	E.B
2	COUNCIL COMMENTS	17.01.23	T.M	N.D

**Tract
Landscape Architects
Urban Designers
Town Planners**

Melbourne P: 03 9429 6133
Brisbane P: 07 3002 6400
Sydney P: 02 9954 3733
Geelong P: 03 5221 0105
Adelaide P: 08 8223 1324
www.tract.com.au

PROJECT
BERWICK WATERS
HONOUR VILLAGE

CLIENT
FRASERS PROPERTY AUSTRALIA

DRAWING TITLE
STAGE 6 STREETScape
DETAILS

DRAWING NUMBER 310-0210-00-L-40-DR600
REVISION 2

DRAWN T.M
CHECKED E.B
APPROVED J.G
DATE 05.05.2022

SCALE
AS SHOWN A1