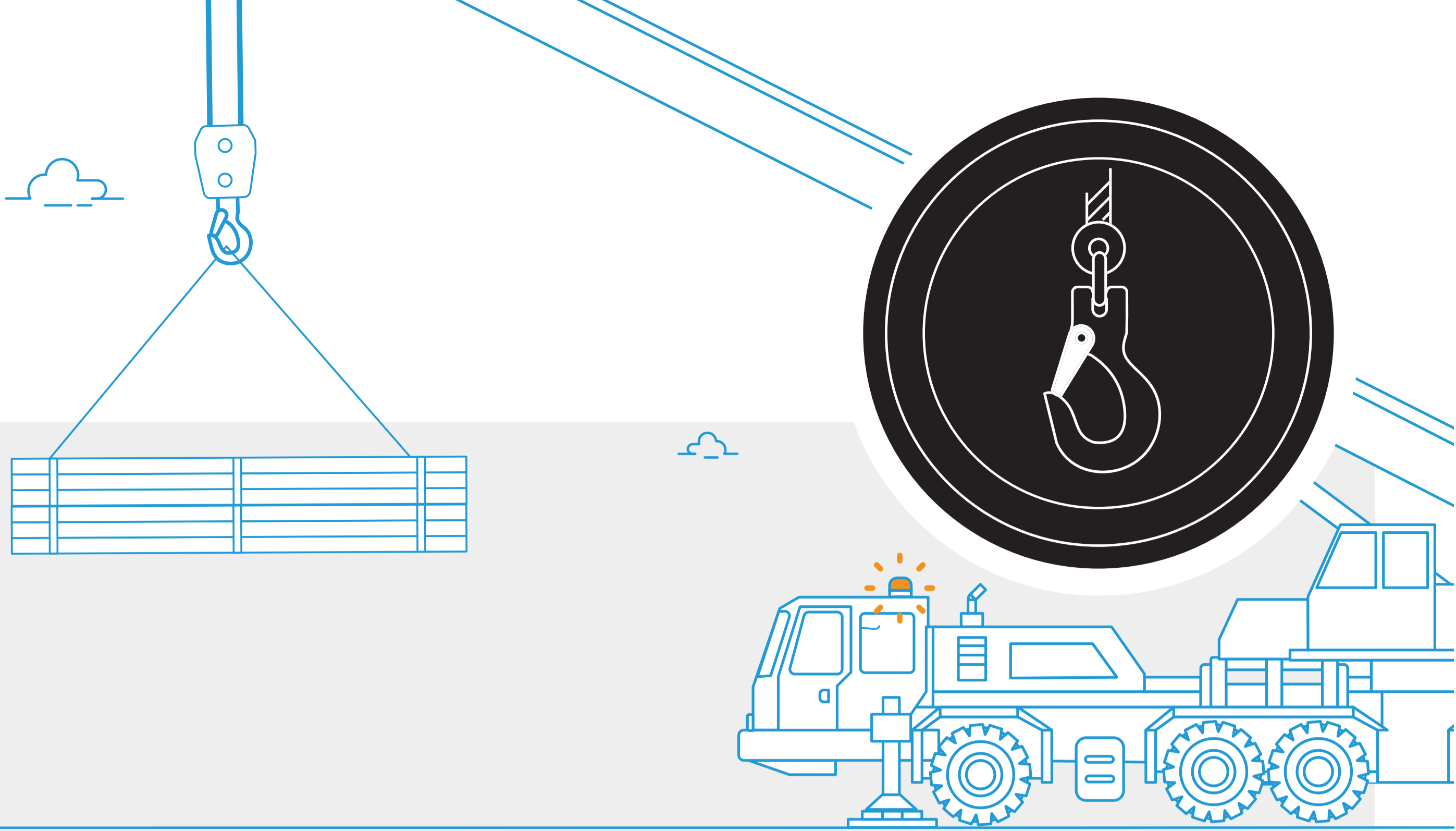


Lifting



Risk - Crane rollover and dropped objects

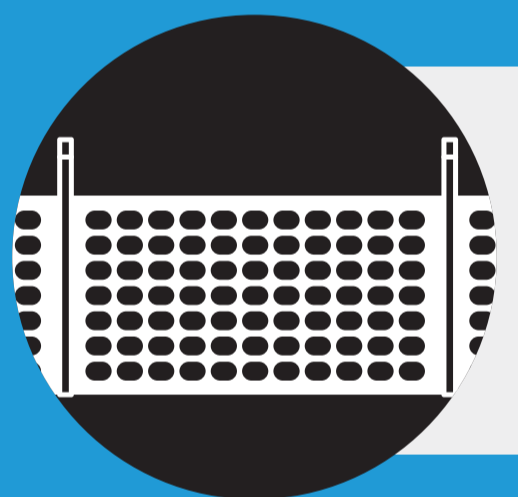
Eliminate

If possible remove the need to lift

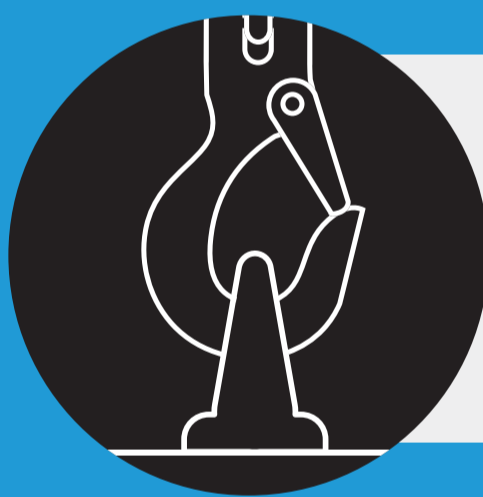
Minimise

If not eliminated, I will apply the below controls as a minimum:

Dropped objects



Establish a physical exclusion zone



All nominated lifting points are engineered



Nobody is under any load at any time



All lifting gear is inspected, maintained and tagged



Positive communication is always maintained

Subsidence and roll over



Ground conditions must be assessed



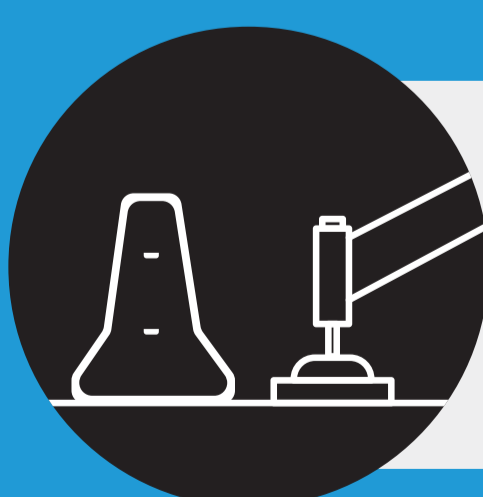
An authorised lift study for high risk lifts



Working load limits are not exceeded



A competent and qualified crane crew



Outriggers must be physically protected

Our Risk Standards

Any questions or feedback? Reach out to our team on site.