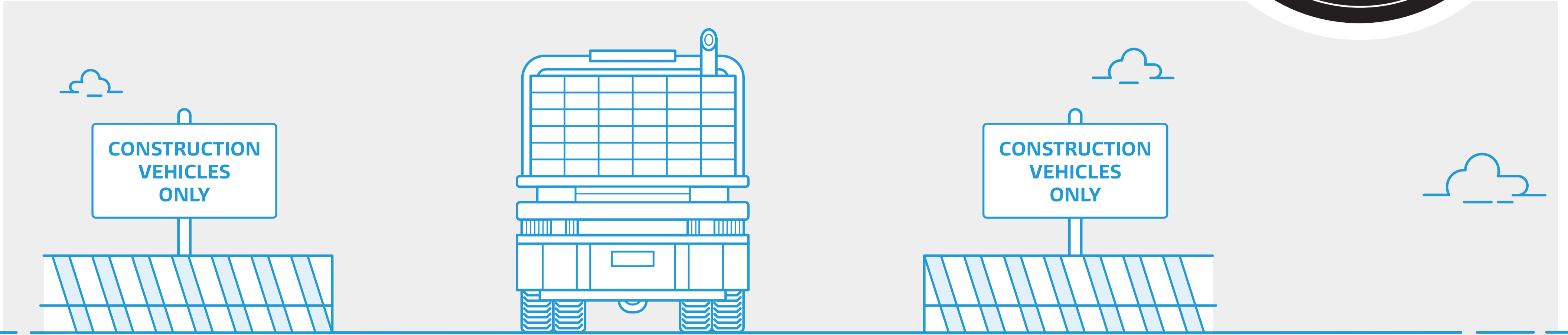
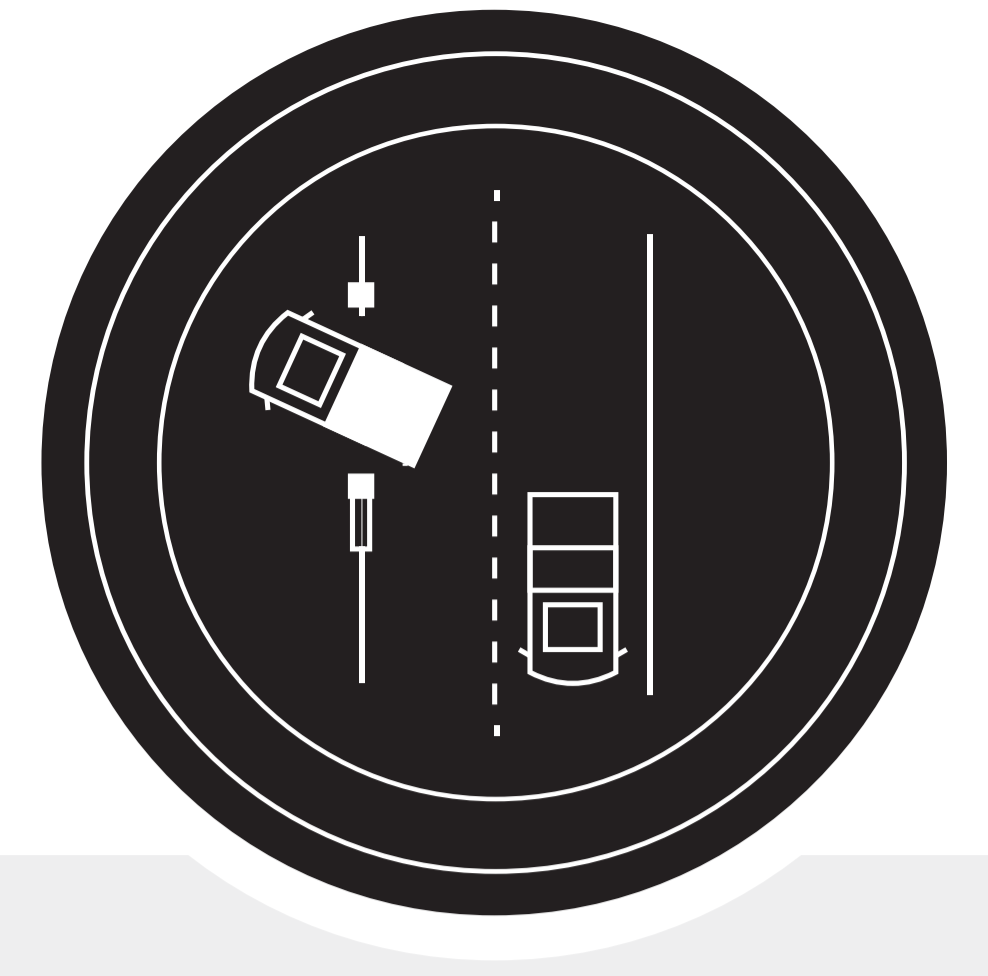


# Traffic Management



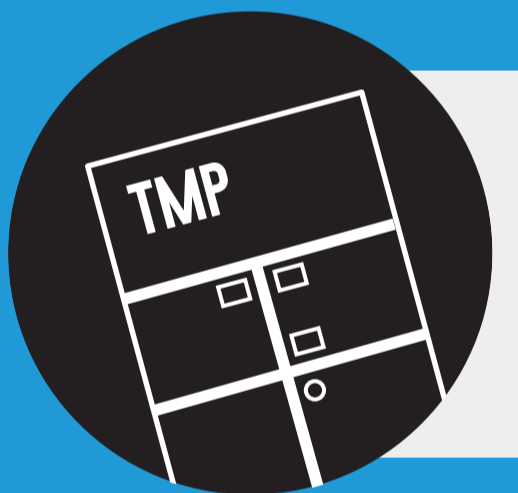
## Risk - Traffic hitting people

# Eliminate

If possible, remove live traffic from the work area with road closures, detours or a traffic switch

# Minimise

If not eliminated, I will apply the below controls as a minimum:



An approved Traffic Management Plan (TMP) is in place



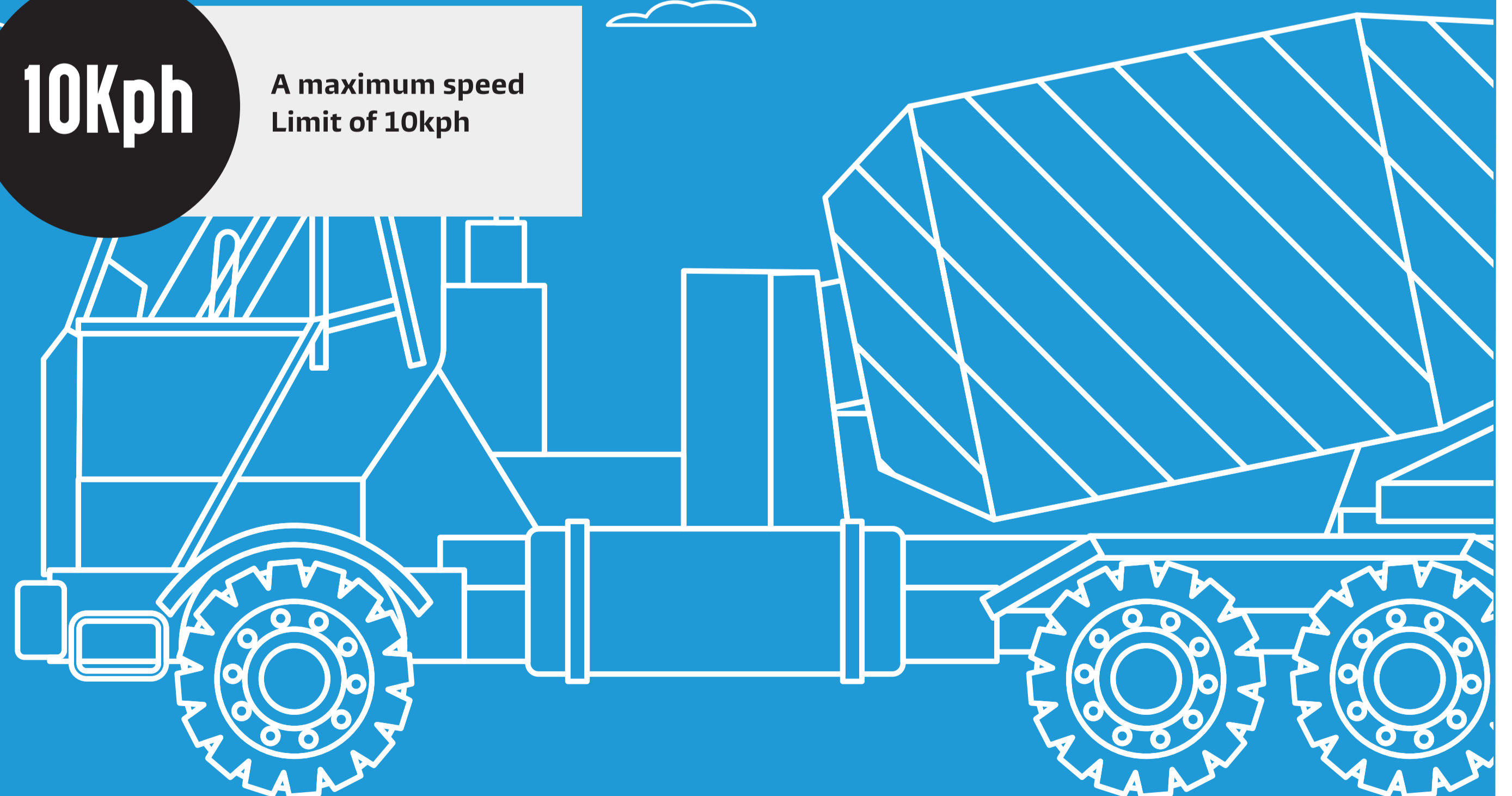
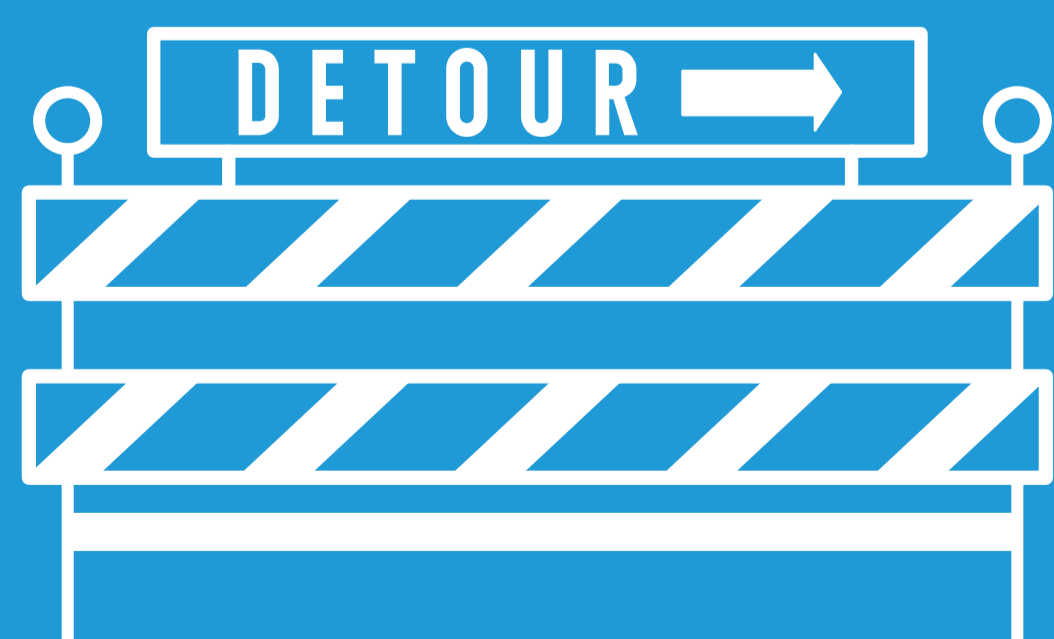
Reduce the number of vehicles on site



Designated construction access points must be established



A maximum speed Limit of 10kph



Our **Risk Standards**

Any questions or feedback? Reach out to our team on site.

