

*The information and images in this brochure are intended as a general introduction to The Waterfront, Shell Cove and do not form an offer, guarantee or contract.*

*This material was prepared prior to the completion of the design and construction of the buildings featured. Whilst every care is taken to ensure that the content in this brochure is correct, this information is to be used as a guide only. Please note that changes may be made during the development process and figures, plans, dimensions, areas, specifications and landscaping may be changed without notice. The computer generated images are artist impressions and are indicative only. All distances provided are approximate distances. Purchasers must rely on their own enquiries and the Contract for Sale. This brochure is indicative only and is not an offer of contract. An approved quarry operates between Shell Cove and Bass Point. Printed March 2022.*

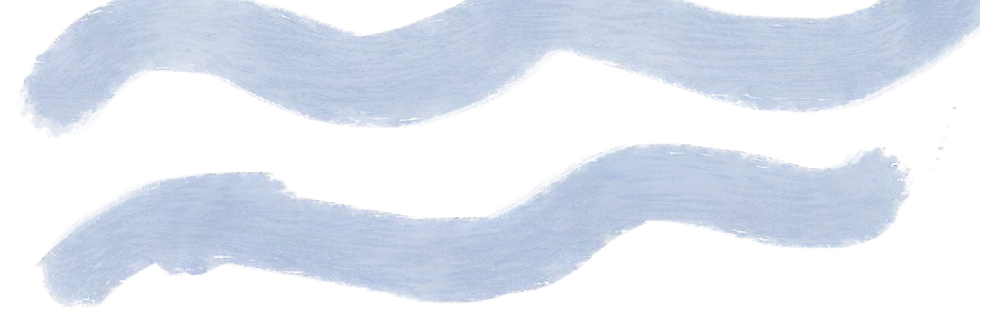


ARTIST'S IMPRESSION

# LIVE THE COASTAL LIFE

SHELL COVE

*Town Centre*



Nestled in one of the most beautiful regions of Australia, The Waterfront, Shell Cove is coastal living at its finest. Fast becoming the top lifestyle destination for New South Wales, the vibrant Town Centre features harbourside dining, specialty shops, cafés, a future hotel and The Waterfront Tavern. You'll find everything you need, right on your doorstep.



VISIT THE SALES CENTRE

Call 13 38 38 or visit [thewaterfrontshellcove.com.au](http://thewaterfrontshellcove.com.au)

# THE WATERFRONT



## Town Centre

- **SHELLHARBOUR MARINA**  
 270 berth marina offering direct access to the Pacific Ocean, charter boat operations, a public boat ramp and a variety of commercial marina facilities and services.
- **FUTURE MIXED USE (WITH RESIDENTIAL ABOVE)**  
 Future retail shops with contemporary 1, 2 & 3 bedroom apartments above.
- **RETAIL & SPECIALTY SHOPS**  
 A selection of cafés, restaurants, retail shops and specialty stores including a full line Woolworths supermarket, a bakery, ice-creamery, BWS, vet, pharmacist, cafés, barber, dentist & more.
- **THE WATERFRONT SALES CENTRE**  
 Visit the Sales Centre today and make your coastal dream a reality. Choose from a selection of brand new homes, land lots and apartments. Luxury coastal living at The Waterfront.
- **WATERFRONT DINING PRECINCT**  
 Waterfront dining with a selection of cafés and restaurants positioned along the harbour edge offering alfresco dining and spectacular marina views.
- **WOOLWORTHS SUPERMARKET**  
 Woolworths supermarket provides residents and the wider local community with convenient access to an uncompromised shopping experience without ever having to leave the neighbourhood.
- **THE WATERFRONT TAVERN**  
 A family friendly tavern perfect for harbourside dining, an afternoon drink or simply relaxing on the decks extending over the harbour.
- **FUTURE HOTEL**  
 The hotel is expected to open in 2023 and will offer luxury harbourside hotel facilities including contemporary hotel rooms, serviced apartments, resort style pools along with a ball room, function room, restaurant, bar and day spa.
- **CENTRAL PIER & CHARTER BOATS**  
 The pier will offer a selection of charter boat tours such as whale watching, dolphin watching, diving and deep sea fishing.
- **LIBRARY, COMMUNITY & VISITOR INFORMATION CENTRE**  
 This state-of-the-art building will be a hub for community and creative activities offering a library, gallery, meeting rooms for hire, a visitor's information area and multi-purpose spaces for activities such as playgroups, book clubs and more.
- **PROMENADE & BOARDWALK**  
 An extensive 2.5km promenade and boardwalk around the harbour foreshore providing pedestrian access for casual walks or runs along the full circumference of the harbour to the end of the breakwall. The boardwalk and promenade also provides access to parks, playgrounds, viewing platforms, outdoor exercise areas and a public art and play trail around the foreshore.
- **BOAT MAINTENANCE & PUBLIC BOAT RAMP**  
 The future Boat Maintenance Facility will offer a variety of commercial marina facilities and services including boat haul out facilities, a travel lift, dry stack boat storage, chandlery spaces and workshop areas.
- **KID'S BEACH**  
 The kid's beach is the perfect place for children to have fun playing in the sand building sandcastles or cooling off by wading in the shallow water.
- **FUTURE MARINA SERVICES CENTRE**  
 The Marina Services Centre (MSC) fronts the boardwalk adjacent to the marina. The MSC will offer facilities for marina berth tenants including a member's lounge, kitchen, bathroom facilities and locker storage along with the office for the Marina Operator.

ARTIST'S IMPRESSION