

BERWICK WATERS

HONOUR VILLAGE - STAGE 15 STREETScape

DRAWING SCHEDULE

310-210-00-L-41-DR100	COVER SHEET/ DRAWINGS SHEDULE / KEYPLAN	1:1000
310-210-00-L-41-DR101	LEGEND / PLANT SCHEDULE	
310-210-00-L-41-DR400	LANDSCAPE PLAN	1:500
310-210-00-L-41-DR610	SOFTSCAPE DETAILS	AS SHOWN

KEY PLAN
SCALE 1:7500



- GENERAL NOTES
- DO NOT SCALE DRAWINGS. FIGURED DIMENSIONS HAVE PREFERENCE OVER SCALED DIMENSIONS.
 - ANY DISCREPANCIES MUST BE REPORTED IMMEDIATELY TO THE SUPERINTENDENT.
 - THESE DRAWINGS ARE TO BE READ IN CONJUNCTION WITH THE DETAILS, SPECIFICATIONS AND ENGINEERING DOCUMENTS.
 - LOCATE AND PROTECT ALL UNDERGROUND SERVICES PRIOR TO ANY EXCAVATION. MAKE GOOD ALL DAMAGE TO EXISTING WORKS CAUSED BY THE ACTIVITY OF THESE WORKS.
 - THESE DRAWINGS ARE TO BE PRINTED IN COLOUR
- These designs, plans and specifications and the copyright therein are the property of TRACT CONSULTANTS PTY. LTD. and must not be used, reproduced or copied, wholly or in part, without the written permission of TRACT CONSULTANTS PTY. LTD.

- TREE PLANTING NOTES:
- THE PLACEMENT OF THE STREET TREES MEETS AUSNET'S TREE PLANTING REQUIREMENTS NEAR UNDERGROUND CABLES AND VESTS 'URBAN RESIDENTIAL DEVELOPMENT (URD) DESIGN & CONSTRUCTION STANDARD' TO ENSURE THAT TREES DO NOT ENCRONCH ON SERVICES.
- STREET TREES ARE TO BE PLANTED NO CLOSER THAN:
- 2.5m FROM HV & LV UNDERGROUND CABLE JOINTS
 - 2.5m FROM SPARE OR FUTURE USE CONDUIT ENDS
 - 2.5m FROM PARALLEL OR DISTRIBUTION PILLARS AND SWITCHING CABINETS
 - 2.5m FROM SUBSTATIONS
 - 1.5m FROM FOOTPATHS
 - 1.25m FROM THE BACK OF KERB
 - 3.0m FROM DRIVEWAYS
 - 4.0m FROM LIGHT POLES AND POWER POLES
 - 2.0m FROM SERVICE PITS
 - 1.5m ON EITHER SIDE FROM THE SERVICE INDICATOR ON THE FRONT OF THE KERB
 - 6.0m FROM INTERSECTIONS
 - 2.0m FROM STORMWATER PITS
 - 3.0m FROM FIRE PLUGS
 - 5.0m FROM COUNCIL RESERVE ADJOINING PROPERTIES
- TREES TO BE BEHIND SPLAY FOR CORNER BLOCKS.
- TREES TO BE POSITIONED CENTRALLY WITHIN NATURESTRIPS
- CONTRACTOR IS TO NOTIFY SUPERINTENDENT PRIOR TO DELETING ANY TREES DUE TO SERVICE INFRASTRUCTURE LOCATIONS.
- FINAL TREE PLACEMENT TO BE DETERMINED ON SITE WITH COUNCIL AT PRE-COMMENCEMENT MEETING.



PRELIMINARY NOT FOR CONSTRUCTION

REV	DESCRIPTION	DATE	DRN	CHKD
1	COUNCIL COMMENTS	07.06.22	P.C	J.G

Tract
Landscape Architects
Urban Designers
Town Planners

Melbourne P: 03 9429 6133
Brisbane P: 07 3002 6400
Sydney P: 02 9554 3733
Geelong P: 03 5221 0105
Adelaide P: 08 8223 1524

www.tract.com.au

PROJECT
BERWICK WATERS
HONOUR VILLAGE

CLIENT
FRASERS PROPERTY AUSTRALIA

DRAWING TITLE
STAGE 5 STREETScape
COVER SHEET
DRAWING SCHEDULE / KEY PLAN

DRAWING NUMBER	REVISION
310-0210-00-L-41-DR100	1

DRAWN	CHECKED	APPROVED	DATE
T.M	E.B	J.G	10.03.2022

SCALE
1:1000 A1

LEGEND

GENERAL

- LIMIT OF WORKS
- PROPOSED TREES TO ADJOINING STAGES
SHOWN AS INDICATIVE ONLY
REFER TO EACH PACKAGE FOR FURTHER DETAIL
- EXISTING NEIGHBOURING PATH NETWORK
- FUTURE NEIGHBOURING PATH NETWORK
- DESALINATION PIPELINE EASEMENT

SOFTWORKS

- G2 - HYDROSEEDING TURF
REFER TO DETAIL
(ALL GRASSED AREAS TO HAVE A MAX GRADE OF 1:6)

STREET TREE PLANTING

- 45
LITRE
- ACER BUERGERIANUM
Trident Maple
- 1
600

PLANTING SCHEDULE

CODE	BOTANK NAME	COMMON NAME	NATIVE/EXOTIC	MATURE SIZE (H x W)	DENSITY	INSTALL SIZE	QTY
TREES - 45 LITRE							
	Acer buergerianum	Trident Maple	Exotic	10 x 5m	as shown	45Lt / 2m (H) / 30mm Cal	21
						Total	21

GENERAL NOTES

1. DO NOT SCALE DRAWINGS. FIGURED DIMENSIONS HAVE PREFERENCE OVER SCALED DIMENSIONS.
2. ANY DISCREPANCIES MUST BE REPORTED IMMEDIATELY TO THE SUPERINTENDENT.
3. THESE DRAWINGS ARE TO BE READ IN CONJUNCTION WITH THE DETAILS, SPECIFICATIONS AND ENGINEERING DOCUMENTS.
4. LOCATE AND PROTECT ALL UNDERGROUND SERVICES PRIOR TO ANY EXCAVATION. MAKE GOOD ALL DAMAGE TO EXISTING WORKS CAUSED BY THE ACTIVITY OF THESE WORKS.
5. THESE DRAWINGS ARE TO BE PRINTED IN COLOUR

These designs, plans and specifications and the copyright therein are the property of TRACT CONSULTANTS PTY. LTD. and must not be used, reproduced or copied, wholly or in part, without the written permission of TRACT CONSULTANTS PTY. LTD.

TREE PLANTING NOTES:

THE PLACEMENT OF THE STREET TREES MEETS AUSNET's TREE PLANTING REQUIREMENTS NEAR UNDERGROUND CABLES' AND VESTs 'URBAN RESIDENTIAL DEVELOPMENT (URD) DESIGN & CONSTRUCTION STANDARD' TO ENSURE THAT TREES DO NOT ENCROACH ON SERVICES.

STREET TREES ARE TO BE PLANTED NO CLOSER THAN:

- 2.5m FROM HV & LV UNDERGROUND CABLE JOINTS
- 2.5m FROM SPARE OR FUTURE USE CONDUIT ENDS
- 2.5m FROM PARALLEL OR DISTRIBUTION PILLARS AND SWITCHING CABINETS
- 2.5m FROM SUBSTATIONS
- 1.5m FROM FOOTPATHS
- 1.25m FROM THE BACK OF KERB
- 3.0m FROM DRIVEWAYS
- 4.0m FROM LIGHT POLES AND POWER POLES
- 2.0m FROM SERVICE PITS
- 1.5m ON EITHER SIDE FROM THE SERVICE INDICATOR ON THE FRONT OF THE KERB
- 6.0m FROM INTERSECTIONS
- 2.0m FROM STORMWATER PITS
- 3.0m FROM FIRE PLUGS
- 5.0m FROM COUNCIL RESERVE ADJOINING PROPERTIES

TREES TO BE BEHIND SPLAY FOR CORNER BLOCKS.

TREES TO BE POSITIONED CENTRALLY WITHIN NATURESTRIPS

CONTRACTOR IS TO NOTIFY SUPERINTENDENT PRIOR TO DELETING ANY TREES DUE TO SERVICE INFRASTRUCTURE LOCATIONS.

FINAL TREE PLACEMENT TO BE DETERMINED ON SITE WITH COUNCIL AT PRE-COMMENCEMENT MEETING.



PRELIMINARY
NOT FOR CONSTRUCTION

REV	DESCRIPTION	DATE	DRN	CHKD
1	COUNCIL COMMENTS	07.06.22	P.C	J.G

Tract
Landscape Architects
Urban Designers
Town Planners

Melbourne P: 03 9429 6133
Brisbane P: 07 3002 6400
Sydney P: 02 9954 3733
Geelong P: 03 5221 0105
Adelaide P: 08 8223 1324
www.tract.com.au

PROJECT

BERWICK WATERS
HONOUR VILLAGE

CLIENT

FRASERS PROPERTY AUSTRALIA

DRAWING TITLE

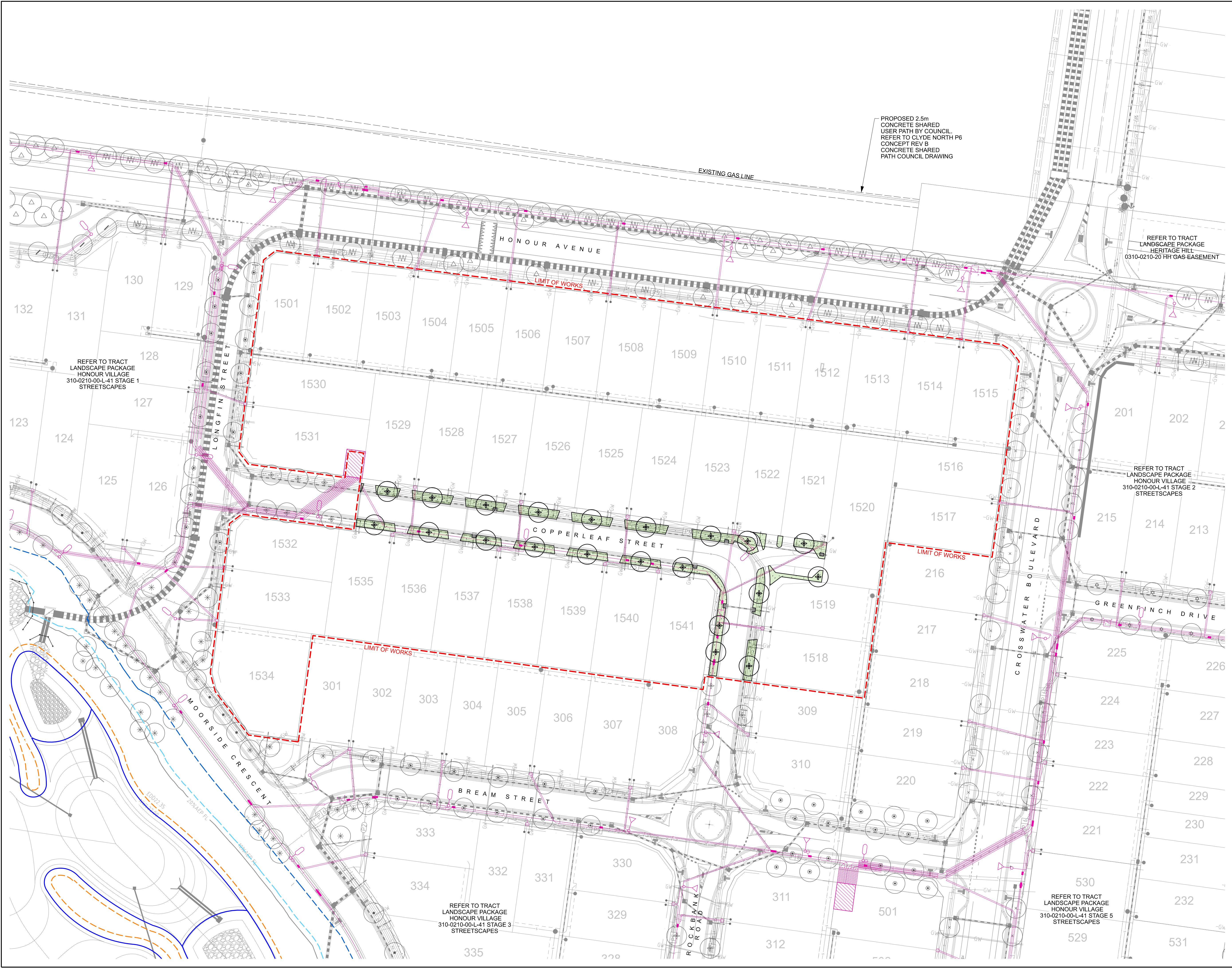
STAGE 5 STREETScape
LEGEND
PLANT SCHEDULE

DRAWING NUMBER	REVISION
310-0210-00-L-41-DR101	1

DRAWN	CHECKED	APPROVED	DATE
T.M	E.B	J.G	10.03.2022

SCALE

A1



- GENERAL NOTES
1. DO NOT SCALE DRAWINGS. FIGURED DIMENSIONS HAVE PREFERENCE OVER SCALED DIMENSIONS.
 2. ANY DISCREPANCIES MUST BE REPORTED IMMEDIATELY TO THE SUPERINTENDENT.
 3. THESE DRAWINGS ARE TO BE READ IN CONJUNCTION WITH THE DETAILS, SPECIFICATIONS AND ENGINEERING DOCUMENTS.
 4. LOCATE AND PROTECT ALL UNDERGROUND SERVICES PRIOR TO ANY EXCAVATION. MAKE GOOD ALL DAMAGE TO EXISTING WORKS CAUSED BY THE ACTIVITY OF THESE WORKS.
 5. THESE DRAWINGS ARE TO BE PRINTED IN COLOUR
- These designs, plans and specifications and the copyright therein are the property of TRACT CONSULTANTS PTY. LTD. and must not be used, reproduced or copied, wholly or in part, without the written permission of TRACT CONSULTANTS PTY. LTD.

- TREE PLANTING NOTES:
- THE PLACEMENT OF THE STREET TREES MEETS AUSNET'S TREE PLANTING REQUIREMENTS NEAR UNDERGROUND CABLES' AND VESTS 'URBAN RESIDENTIAL DEVELOPMENT (URD) DESIGN & CONSTRUCTION STANDARD' TO ENSURE THAT TREES DO NOT ENCROACH ON SERVICES.
- STREET TREES ARE TO BE PLANTED NO CLOSER THAN:
- 2.5m FROM HV & LV UNDERGROUND CABLE JOINTS
 - 2.5m FROM SPARE OR FUTURE USE CONDUIT ENDS
 - 2.5m FROM PARALLEL OR DISTRIBUTION PILLARS AND SWITCHING CABINETS
 - 2.5m FROM SUBSTATIONS
 - 1.5m FROM FOOTPATHS
 - 1.25m FROM THE BACK OF KERB
 - 3.0m FROM DRIVEWAYS
 - 4.0m FROM LIGHT POLES AND POWER POLES
 - 2.0m FROM SERVICE PITS
 - 1.5m ON EITHER SIDE FROM THE SERVICE INDICATOR ON THE FRONT OF THE KERB
 - 6.0m FROM INTERSECTIONS
 - 2.0m FROM STORMWATER PITS
 - 3.0m FROM FIRE PLUGS
 - 5.0m FROM COUNCIL RESERVE ADJOINING PROPERTIES
- TREES TO BE BEHIND SPLAY FOR CORNER BLOCKS.
- TREES TO BE POSITIONED CENTRALLY WITHIN NATURESTRIPS
- CONTRACTOR IS TO NOTIFY SUPERINTENDENT PRIOR TO DELETING ANY TREES DUE TO SERVICE INFRASTRUCTURE LOCATIONS.
- FINAL TREE PLACEMENT TO BE DETERMINED ON SITE WITH COUNCIL AT PRE-COMMENCEMENT MEETING.



PRELIMINARY
NOT FOR CONSTRUCTION

REV	DESCRIPTION	DATE	DRN	CHKD
1	COUNCIL COMMENTS	07.06.22	P.C	J.G

Tract
Landscape Architects
Urban Designers
Town Planners

Melbourne P: 03 9429 6133
Brisbane P: 07 3002 6400
Sydney P: 02 9954 3733
Geelong P: 03 5221 0105
Adelaide P: 08 8223 1324

www.tract.com.au

PROJECT
BERWICK WATERS
HONOUR VILLAGE

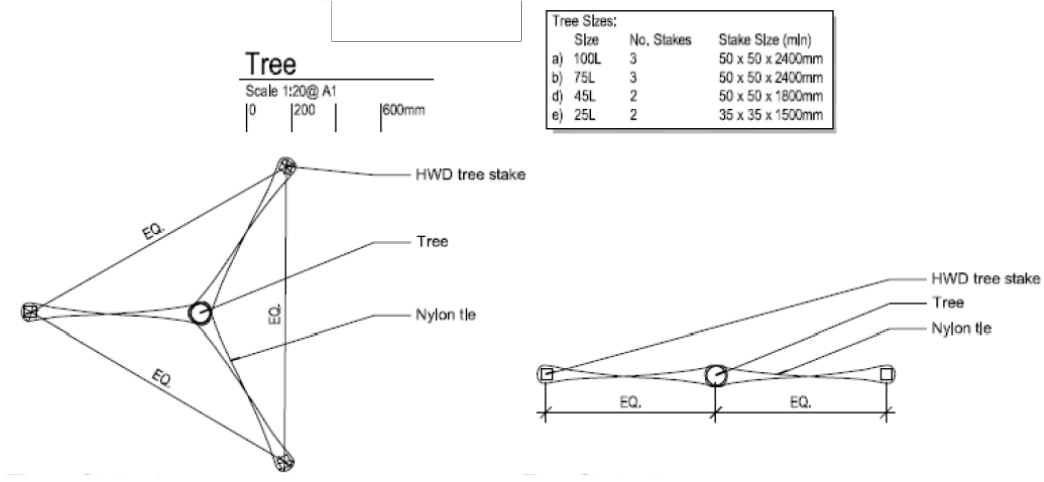
CLIENT
FRASERS PROPERTY AUSTRALIA

DRAWING TITLE
STAGE 5 STREETSCAPE
LANDSCAPE PLAN

DRAWING NUMBER	REVISION
310-0210-00-L-41-DR400	1

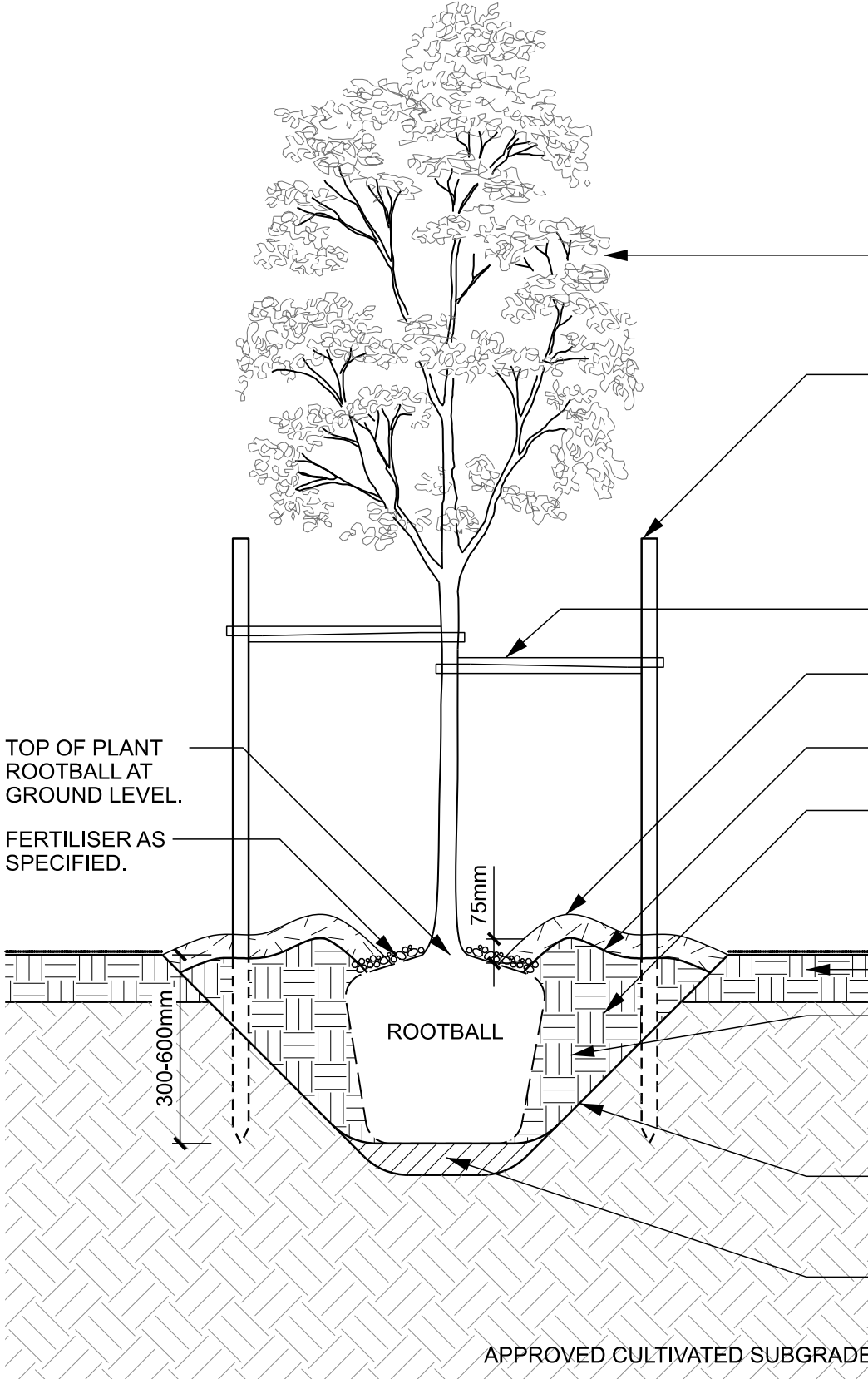
DRAWN	CHECKED	APPROVED	DATE
T.M	E.B	J.G	10.03.2022

SCALE
1:500 A1



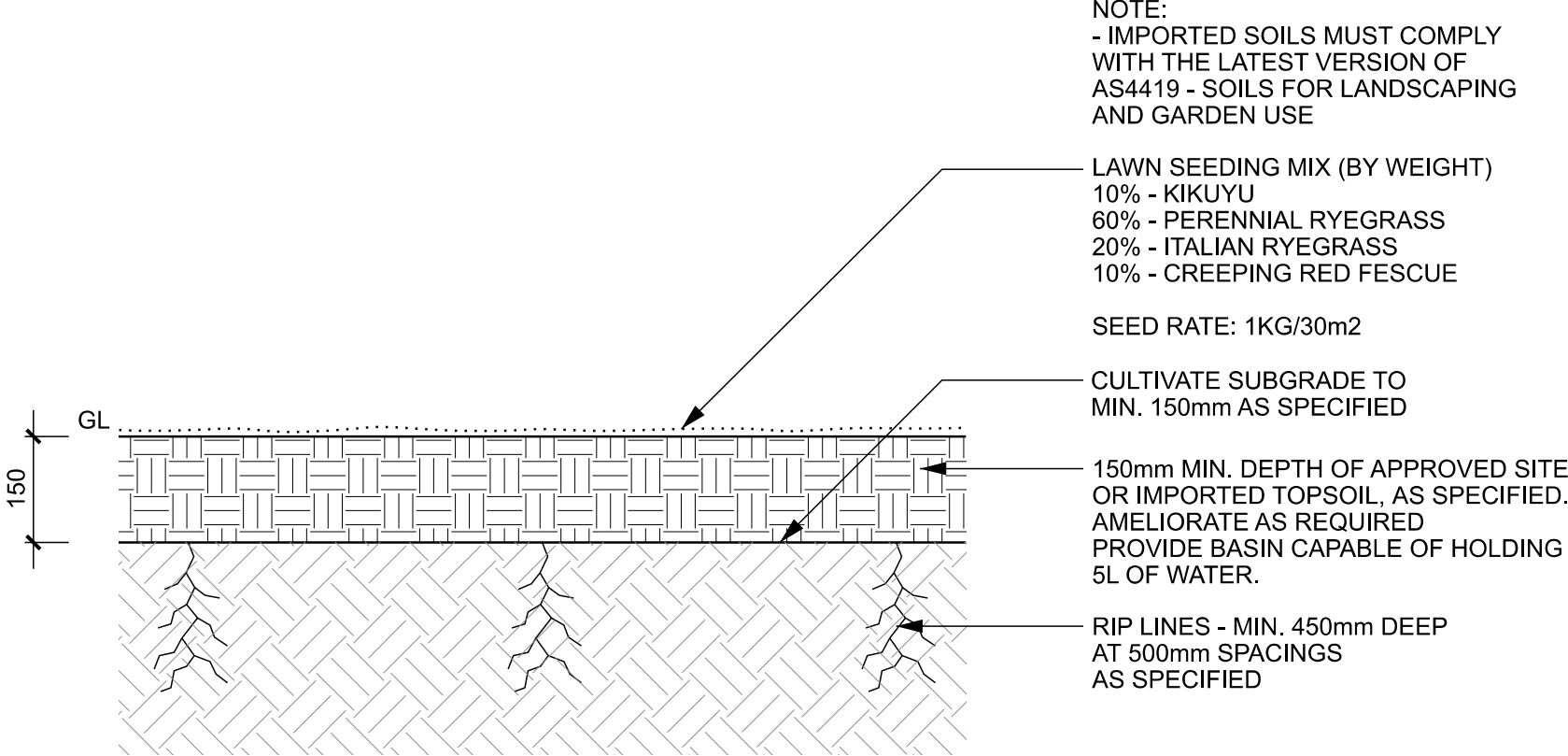
NOTES:

- TREES SHALL HAVE A WELL-DEVELOPED TAPER AND BE SELF-SUPPORTING IN BOTH ROOTBALL AND TRUNK.
- EACH TREE MUST DEMONSTRATE A SINGLE CENTRAL LEADER WITH A GOOD BRANCH STRUCTURE THROUGHOUT.
- ALL TREES MUST DEMONSTRATE GOOD HEALTH AND VIGOR WITH NO PEST OR DISEASE PRESENT.
- TREES SHALL SHOW NO SYMPTOMS OF STRESS OR DAMAGE.
- PLANTING HOLE TO BE WATERED PRIOR TO SETTING OF TREES, WATER TREE THOROUGHLY BEFORE AND IMMEDIATELY AFTER PLANTING.
- IT IS THE RESPONSIBILITY OF THE CONTRACTOR TO CONFIRM THE LOCATION OF ALL UNDERGROUND SERVICES PRIOR TO COMMENCEMENT OR ANY EXCAVATION OR STAKING WORKS.
- SITE TO BE LEFT CLEAN AND TIDY ON COMPLETION OF PLANTING. REMOVE WEEDS AND BUILDING SPOIL FROM PLANTING ZONE.
- IMPORTED SOILS MUST COMPLY WITH THE LATEST VERSION OF AS 4419 - SOILS FOR LANDSCAPING AND GARDEN USE



1 ADVANCED TREE
TYPICAL PLANTING DETAIL

1:20



2 HYDROSEEDING TURF
TYPICAL DETAIL

1:10

GENERAL NOTES

1. DO NOT SCALE DRAWINGS. FIGURED DIMENSIONS HAVE PREFERENCE OVER SCALED DIMENSIONS.
2. ANY DISCREPANCIES MUST BE REPORTED IMMEDIATELY TO THE SUPERINTENDENT.
3. THESE DRAWINGS ARE TO BE READ IN CONJUNCTION WITH THE DETAILS, SPECIFICATIONS AND ENGINEERING DOCUMENTS.
4. LOCATE AND PROTECT ALL UNDERGROUND SERVICES PRIOR TO ANY EXCAVATION. MAKE GOOD ALL DAMAGE TO EXISTING WORKS CAUSED BY THE ACTIVITY OF THESE WORKS.
5. THESE DRAWINGS ARE TO BE PRINTED IN COLOUR

These designs, plans and specifications and the copyright therein are the property of TRACT CONSULTANTS PTY. LTD. and must not be used, reproduced or copied, wholly or in part, without the written permission of TRACT CONSULTANTS PTY. LTD.

TREE PLANTING NOTES:

THE PLACEMENT OF THE STREET TREES MEETS AUSNET's TREE PLANTING REQUIREMENTS NEAR UNDERGROUND CABLES' AND VESTS 'URBAN RESIDENTIAL DEVELOPMENT (URD) DESIGN & CONSTRUCTION STANDARD' TO ENSURE THAT TREES DO NOT ENCROACH ON SERVICES.

STREET TREES ARE TO BE PLANTED NO CLOSER THAN:

- 2.5m FROM HV & LV UNDERGROUND CABLE JOINTS
- 2.5m FROM SPARE OR FUTURE USE CONDUIT ENDS
- 2.5m FROM PARALLEL OR DISTRIBUTION PILLARS AND SWITCHING CABINETS
- 2.5m FROM SUBSTATIONS
- 1.5m FROM FOOTPATHS
- 1.25m FROM THE BACK OF KERB
- 3.0m FROM DRIVEWAYS
- 4.0m FROM LIGHT POLES AND POWER POLES
- 2.0m FROM SERVICE PITS
- 1.5m ON EITHER SIDE FROM THE SERVICE INDICATOR ON THE FRONT OF THE KERB
- 6.0m FROM INTERSECTIONS
- 2.0m FROM STORMWATER PITS
- 3.0m FROM FIRE PLUGS
- 5.0m FROM COUNCIL RESERVE ADJOINING PROPERTIES

TREES TO BE BEHIND SPLAY FOR CORNER BLOCKS.

TREES TO BE POSITIONED CENTRALLY WITHIN NATURESTRIPS

CONTRACTOR IS TO NOTIFY SUPERINTENDENT PRIOR TO DELETING ANY TREES DUE TO SERVICE INFRASTRUCTURE LOCATIONS.

FINAL TREE PLACEMENT TO BE DETERMINED ON SITE WITH COUNCIL AT PRE-COMMENCEMENT MEETING.



PRELIMINARY NOT FOR CONSTRUCTION

REV	DESCRIPTION	DATE	DRN	CHKD
1	COUNCIL COMMENTS	07.06.22	P.C	J.G

Tract Landscape Architects Urban Designers Town Planners

Melbourne P: 03 9429 6133
Brisbane P: 07 3002 6400
Sydney P: 02 9954 3733
Geelong P: 03 5221 0105
Adelaide P: 08 8223 1324

www.tract.com.au

PROJECT

BERWICK WATERS
HONOUR VILLAGE

CLIENT

FRASERS PROPERTY AUSTRALIA

DRAWING TITLE

STAGE 5 STREETScape
DETAILS

DRAWING NUMBER	REVISION
310-0210-00-L-41-DR600	1

DRAWN	CHECKED	APPROVED	DATE
T.M	E.B	J.G	10.03.2022

SCALE
AS SHOWN A1