

**LEGEND**

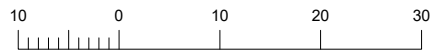
 BUILDING ENVELOPE

**A** SMALL LOT HOUSING  
CODE TYPE A

1. THE BUILDING ENVELOPES AND GARAGE ENVELOPES ON THIS PLAN ARE SHOWN ENCLOSED BY THICK CONTINUOUS LINES.
2. THIS DIAGRAM IS TO BE READ IN CONJUNCTION WITH THE MEMORANDUM OF COMMON PROVISIONS.
3. THE BUILDING CAN BE BUILT ON EITHER SIDE BOUNDARY WHERE NOTED AS "0 or 1" ON THIS DIAGRAM BUT MUST MAINTAIN A MINIMUM 1m SET BACK ON THE OPPOSITE BOUNDARY.



Reeds Consulting Pty Ltd  
Lvl 6, 440 Elizabeth Street  
Melbourne Victoria 3000  
p [03] 8660 3000  
www.reedsconsulting.com.au  
survey@reedsconsulting.com.au

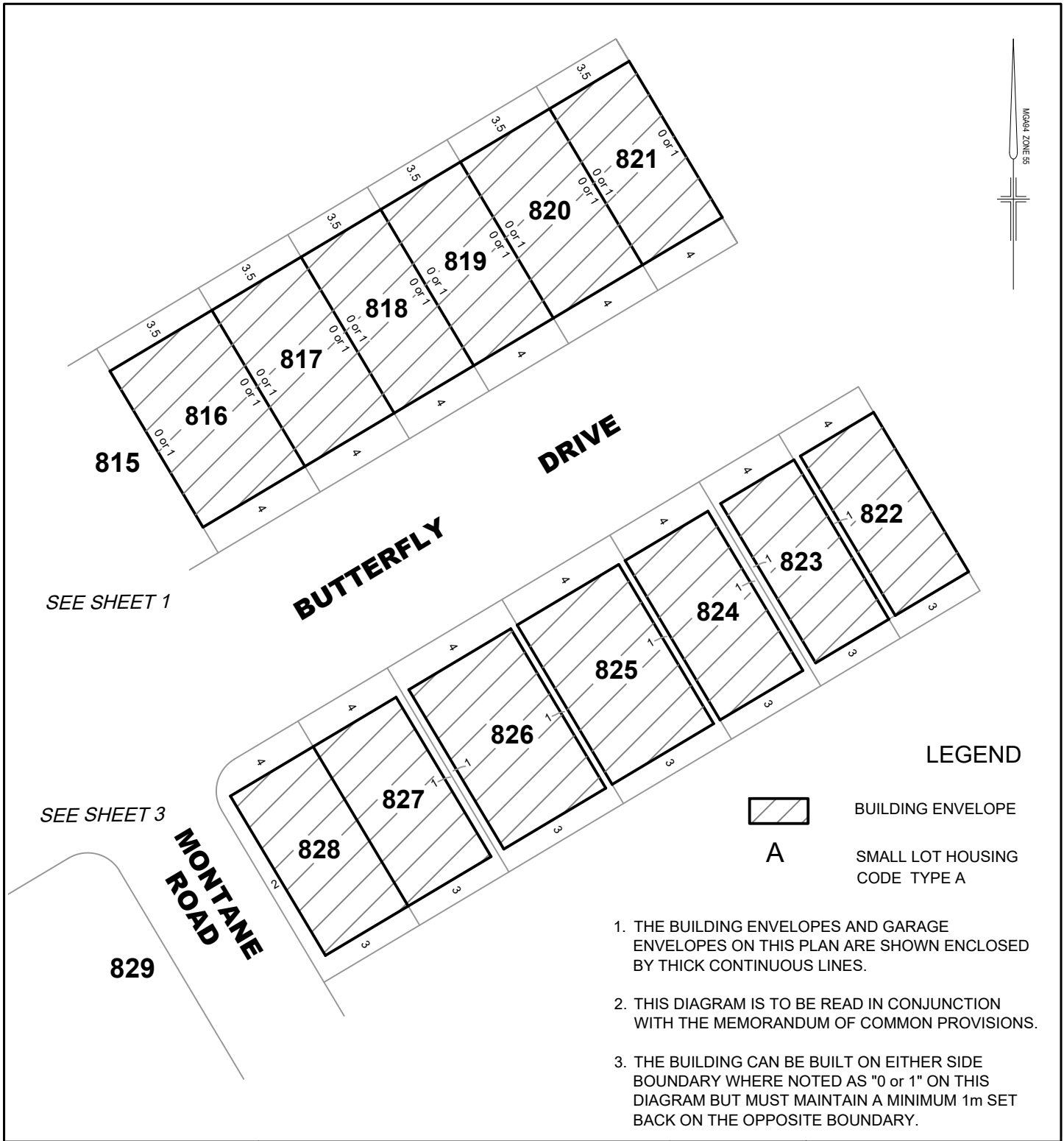


LENGTHS ARE IN METRES

ORIGINAL  
SCALE SHEET SIZE  
1:750 A4

SHEET 1  
REF: **22344/8MCP**  
VERSION: 22344-8-MCP-G.dwg  
DATE: 14/09/2022

MCGILL ZONE 55



**LEGEND**

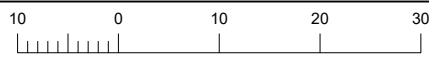


BUILDING ENVELOPE

A

SMALL LOT HOUSING CODE TYPE A

1. THE BUILDING ENVELOPES AND GARAGE ENVELOPES ON THIS PLAN ARE SHOWN ENCLOSED BY THICK CONTINUOUS LINES.
2. THIS DIAGRAM IS TO BE READ IN CONJUNCTION WITH THE MEMORANDUM OF COMMON PROVISIONS.
3. THE BUILDING CAN BE BUILT ON EITHER SIDE BOUNDARY WHERE NOTED AS "0 or 1" ON THIS DIAGRAM BUT MUST MAINTAIN A MINIMUM 1m SET BACK ON THE OPPOSITE BOUNDARY.



LENGTHS ARE IN METRES

ORIGINAL  
SCALE SHEET SIZE  
1:750 A4

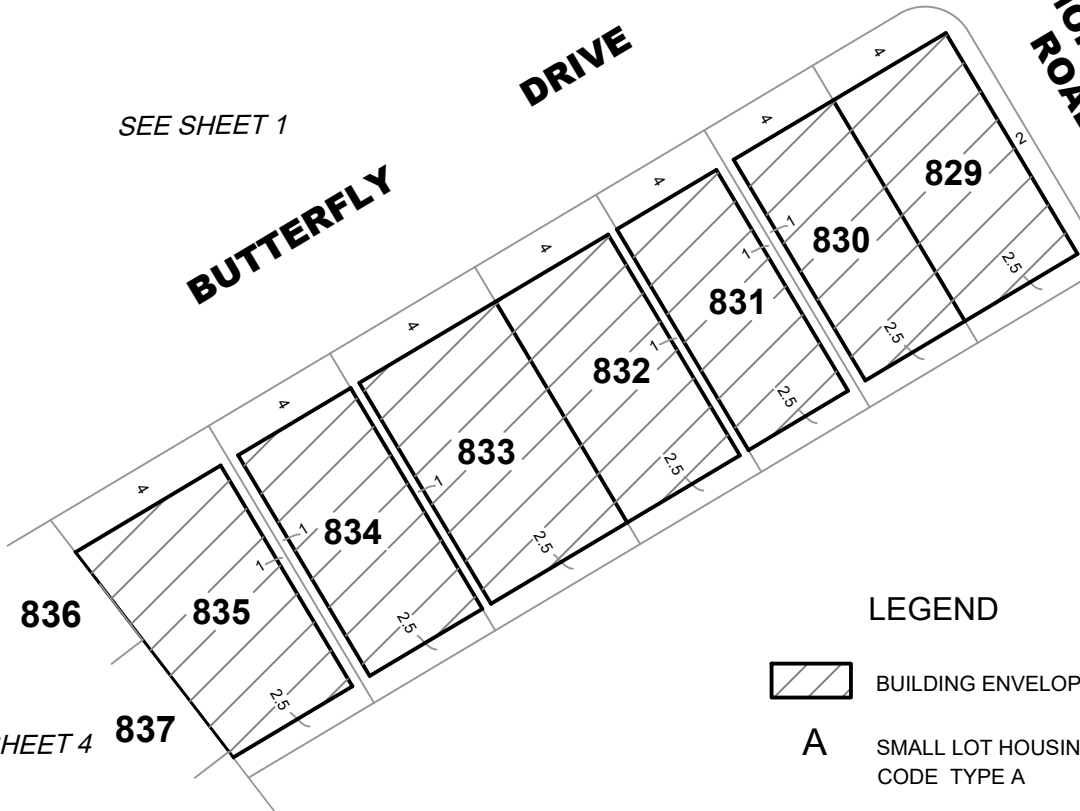
SHEET 2  
REF: **22344/8MCP**  
VERSION: 22344-8-MCP-G.dwg  
DATE: 14/09/2022

SEE SHEET 2

SEE SHEET 1

**BUTTERFLY DRIVE**

**MONTANE ROAD**



**LEGEND**

 BUILDING ENVELOPE

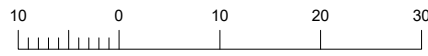
**A** SMALL LOT HOUSING  
CODE TYPE A

1. THE BUILDING ENVELOPES AND GARAGE ENVELOPES ON THIS PLAN ARE SHOWN ENCLOSED BY THICK CO
2. NTINUOUS LINES.
3. THIS DIAGRAM IS TO BE READ IN CONJUNCTION WITH THE MEMORANDUM OF COMMON PROVISIONS.
4. THE BUILDING CAN BE BUILT ON EITHER SIDE BOUNDARY WHERE NOTED AS "0 or 1" ON THIS DIAGRAM BUT MUST MAINTAIN A MINIMUM 1m SET BACK ON THE OPPOSITE BOUNDARY.

SEE SHEET 4

**REEDS**  
CONSULTING

Reeds Consulting Pty Ltd  
Lvl 6, 440 Elizabeth Street  
Melbourne Victoria 3000  
p [03] 8660 3000  
www.reedsconsulting.com.au  
survey@reedsconsulting.com.au



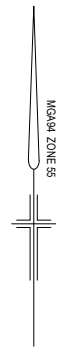
LENGTHS ARE IN METRES

ORIGINAL

SCALE SHEET  
1:750 SIZE  
A4

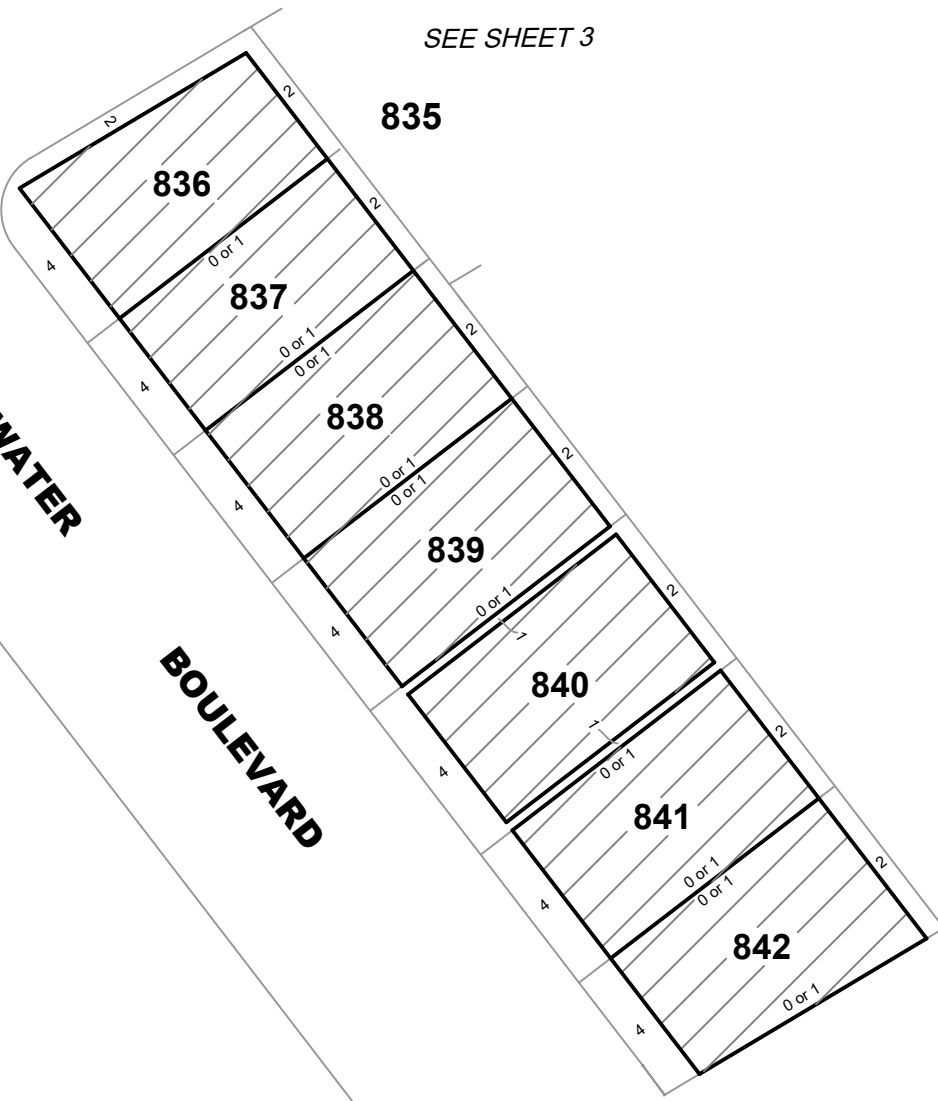
SHEET 3

REF: **22344/8MCP**  
VERSION: 22344-8-MCP-G.dwg  
DATE: 14/09/2022



SEE SHEET 1

SEE SHEET 3



**LEGEND**

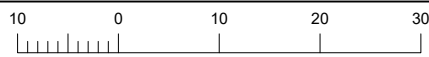
 BUILDING ENVELOPE

**A** SMALL LOT HOUSING  
CODE TYPE A

1. THE BUILDING ENVELOPES AND GARAGE ENVELOPES ON THIS PLAN ARE SHOWN ENCLOSED BY THICK CONTINUOUS LINES.
2. THIS DIAGRAM IS TO BE READ IN CONJUNCTION WITH THE MEMORANDUM OF COMMON PROVISIONS.
3. THE BUILDING CAN BE BUILT ON EITHER SIDE BOUNDARY WHERE NOTED AS "0 or 1" ON THIS DIAGRAM BUT MUST MAINTAIN A MINIMUM 1m SET BACK ON THE OPPOSITE BOUNDARY.

**REEDS**  
CONSULTING

Reeds Consulting Pty Ltd  
Lvl 4, 440 Elizabeth Street  
Melbourne Victoria 3000  
p 03 8648 3000  
www.reedsconsulting.com.au  
survey@reedsconsulting.com.au



LENGTHS ARE IN METRES

ORIGINAL  
SCALE SHEET SIZE  
1:750 A4

SHEET 4  
REF: **22344/8MCP**  
VERSION: 22344-8-MCP-G.dwg  
DATE: 14/09/2022