

# Real places for real people.

**Our Residential Portfolio 2018.**





Who we are.

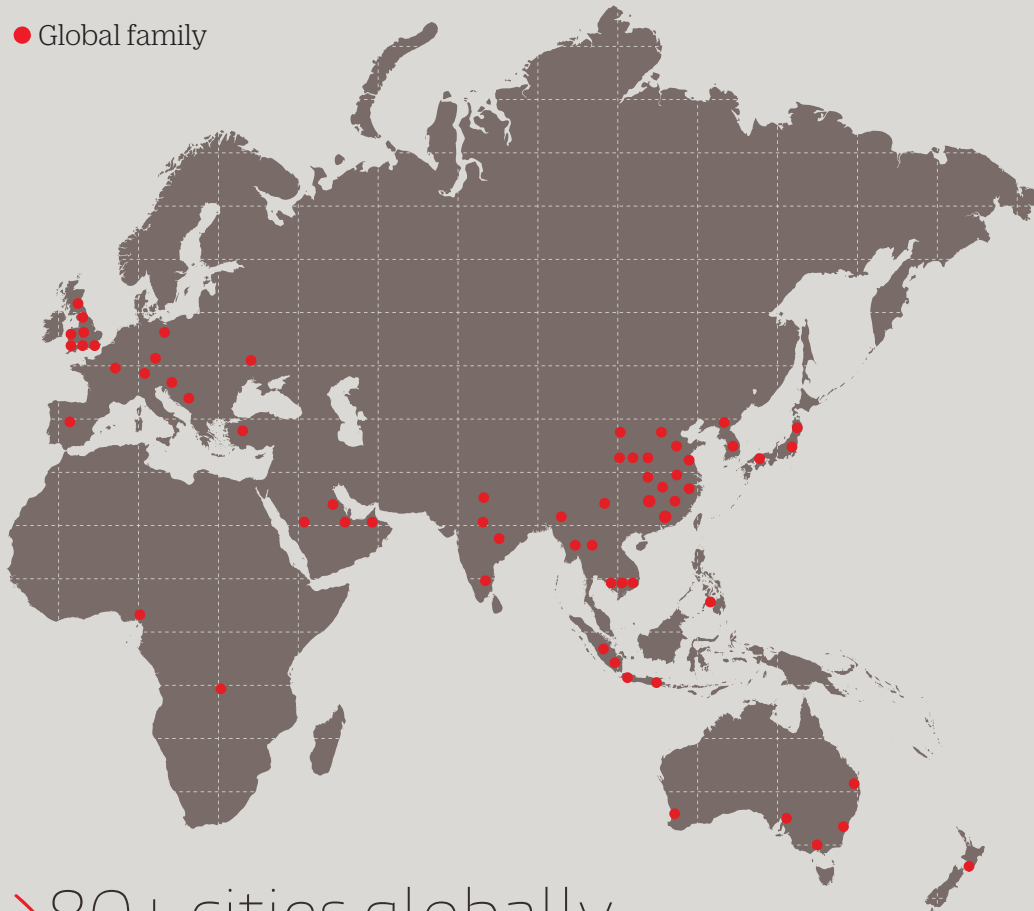


We're part of an international platform.  
An organisation that has property interests  
all over the world, from residential  
to industrial property, from retail to  
hospitality. Our roots are here in Australia,  
but our outlook is global.



**Rod Fehring**  
CEO

● Global family



> 5,500  
Staff around the world

> 135,000  
Homes built in Australia

> 19,000  
Homes built in Singapore

> 23,000  
Hotel rooms owned  
and/or operated

> 80+ cities globally  
> 5 cities locally

> 1924  
Established in Australia

## How have we grown.

Local at heart but international of mind, Frasers Property Australia has been creating real places for real people in Australia for over 90 years. Whether we're delivering warm family homes or dynamic spaces for shopping and business, we believe experience matters, and that puts our customers at the heart of our business.

Frasers Property Australia is part of an international property group with total assets of more than S\$27 billion and a portfolio spanning 80 cities around the world. Operating under the global Frasers Property brand, we have the scale and influence of an international company with the benefit of Australand's diverse 90 year history in Australia.

Over those years we've built a strong reputation as one of Australia's most successful diversified property groups. Our activities across Australia include developing residential land, houses, apartments, commercial, industrial and retail properties, and there's more to come.

Being part of a major international property group inspires confidence and creates opportunities for our company and our clients.



# Frasers Property Limited's international residential properties.

## Australia

### NSW

Central Park, Chippendale  
Centrale, North Ryde  
Discovery Point, Wolli Creek  
Ed.Square, Edmondson Park  
Fairwater, Blacktown  
Putney Hill, Ryde  
The Waterfront, Shell Cove  
Tailor's Walk, Botany  
The Gallery, Lidcombe

### VIC

Berwick Waters, Clyde North  
Burwood Brickworks,  
Burwood East  
Encompass, Carlton  
Found, Carlton  
Life Point Cook, Point Cook  
Mambourin, Mambourin  
Parkside, Parkville  
Sunbury Fields, Sunbury  
Valley Park, Westmeadows  
Wallara Waters, Wallan

### QLD

Brookhaven, Bahrs Scrub  
Coorparoo Square, Coorparoo  
Cova, Hope Island  
Hamilton Reach, Hamilton  
The Rise, Park Ridge  
Yungaba, Kangaroo Point

### WA

Baldivis Grove, Baldivis  
Baldivis Parks, Baldivis  
Cockburn Living,  
Cockburn Central  
East Green, Greenwood  
Frasers Landing, Mandurah  
Jindowie, Yanchep  
Port Coogee, North Coogee  
Queens Riverside, East Perth

### China

Suzhou Baitang One, Suzhou  
Gemdale Mega City, Shanghai

## New Zealand

Coast Papamoa Beach,  
Bay of Plenty

## Singapore

North Park Residences  
Parc Life  
Seaside Residences

## Thailand

One Bangkok

## United Kingdom

Riverside Quarter, London  
Camberwell on the Green,  
London

## Vietnam

Q2 Thao Dien,  
Ho Chi Minh City

## Frasers Hospitality

Australia  
Bahrain  
China  
France  
Germany  
Hungary  
India  
Indonesia  
Japan  
Malaysia  
Nigeria  
Philippines  
Qatar  
Republic of Congo  
Saudi Arabia  
Singapore  
South Korea  
Spain  
Switzerland  
Thailand  
Turkey  
United Arab Emirates  
United Kingdom  
Vietnam



**Your  
experience  
matters**

At Frasers Property Australia, we understand the human side of property. Our service focuses on making things simpler and easier for real people, because everything we do is about making a real difference to people's lives and caring deeply about their experience.



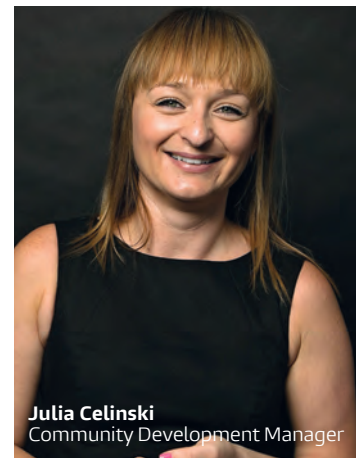
**Debbie Kokanovic**  
Prosperity Care Manager



**Theo Mouratidis**  
Residential Property Manager



**Kesree Jones**  
GM, National Sales Programs



**Julia Celinski**  
Community Development Manager

## **Prosperity Care**

We understand that buying a property is a major decision, so our people will work to help you from the moment you start looking for a new home, right up until you've unpacked your boxes. We'll support you throughout the buying journey and we'll let you know what information will be required at key stages. We'll try to keep it simple and clear. Naturally, we'll provide updates during the construction process, and we'll take the time to share the latest news and events from your new neighbourhood.

**Prosperity Care**  
13 10 25

## **Property management**

Are you an investor, or thinking of becoming one? Once you've found the right property for your investment portfolio, our dedicated property management teams can ensure that your investment is professionally and effectively managed. Frasers Property Management employs a rigorous tenancy selection process, inspection and maintenance schedules, so you're minimising risks and maximising your returns. And of course, you can leave the paperwork to us.

**Frasers Property Management**  
13 10 25

## **Prosperity Rewards**

We appreciate our customers and reward their loyalty with ongoing value and rewards. Prosperity Rewards delivers value well after our customers buy with us, generous purchase rewards on future property purchases, referral rewards when you introduce us to friends or family, priority notification of new releases and a series of partner offers, like access to insurance, international travel, or home improvements.

**Prosperity Rewards**  
13 86 88

## **Community development**

When you commit yourself to creating real places for real people, you really need a plan. Our Residential division operates a range of initiatives and programs designed to create better communities, with a focus on wellness, involvement, belonging and quality of life. At many of our communities we host free Live Life Get Active fitness camps – just one of the ways we help bring neighbours together.

**Community development**  
13 10 25



# Experience matters.

Frasers Property has created over 135,000 homes across Australia since we started out in 1924. Right now we're creating suburban communities and urban villages, with a diverse offering which includes land, house and land packages, townhouses and apartments.

NSW



**The Gallery at Botanica**  
Lidcombe, NSW

A boutique collection of stylish new apartments and unique heritage homes in Sydney's Inner West, 14km from Sydney's CBD.



**Centrale**  
North Ryde, NSW

Designer apartments combined with a vibrant urban lifestyle all just one stop from Chatswood and 13km from Sydney's CBD.



**Cova**  
Hope Island, QLD

Masterplanned to perfection, the Cova community offers a choice of living options centred around a unique marina and waterfront setting.



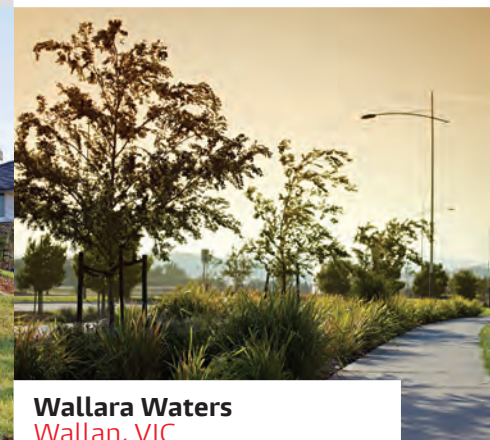
**Hamilton Reach**  
Hamilton, QLD

A riverfront lifestyle like no other. Luxury apartments and terrace homes located in an idyllic masterplanned community just 6km from Brisbane's CBD.



**Valley Park**  
Westmeadows, VIC

Upgrade your lifestyle at Valley Park, an exciting project encompassing a broad range of community initiatives, located just 17km from Melbourne's CBD.



**Wallara Waters**  
Wallan, VIC

At Wallara Waters we're creating a family-oriented neighbourhood with over 6 hectares of wetlands and open spaces.





**Central Park**  
Chippendale, NSW

Australia's most award-winning urban village – Central Park. Now presenting Duo and Wonderland, the final 1, 2 & 3 bedroom apartments to conclude this iconic masterplan development, located 1.5km from Town Hall and centrally connected to Central station.



**Discovery Point**  
Wolli Creek, NSW

Only 10km from Sydney's CBD, Discovery Point is chic apartment living within an exclusive parkside, cityside and waterside location with an onsite train station.



**Ed.Square**  
Edmondson Park NSW

A new urban community and vibrant town centre coming soon to Sydney's south west, adjoining Edmondson Park train station with an onsite shopping centre.



**Fairwater**  
Blacktown, NSW

A new community in Western Sydney offering a wide choice of contemporary home options set amongst lakes and parklands, and only 800m to the train station.



**The Rise**  
Park Ridge, QLD

The Rise is located in Park Ridge, a suburb emerging as a vibrant, connected community offering land and turnkey house and land options.



**Yungaba**  
Kangaroo Point QLD

From heritage residences to modern apartments, Yungaba offers inner city riverfront living like no other. Located just 800m to Brisbane CBD.



**Berwick Waters**  
Clyde North, VIC

Berwick Waters offers buyers an extensive range of home sites and features over 52 hectares of wetlands and open space.



**Burwood Brickworks**  
Burwood East, VIC

We are breathing new life into the former Burwood Brickworks site that will include a shopping centre and choice of housing options. Anticipated launch 2018.



**Encompass**  
Carlton, VIC

Encompass is a marvel of modern design that combines discerning architecture, outdoor spaces, sustainability, and the best of urban living.



**Baldvis Grove**  
Baldvis, WA

Live. Love. Grow. Located in established Baldvis, this boutique land estate enjoys a natural connection with the local community.



**Baldvis Parks**  
Baldvis, WA

Baldvis Parks is a place where parks are part of your lifestyle, offering activity and adventure to all ages. Land now selling.



**Cockburn Living**  
Cockburn Central WA

Cockburn Living, a contemporary apartment lifestyle right in the heart of one of Perth's vibrant new urban communities.



**East Green**  
Greenwood, WA

A collection of fully-completed homes and apartments in the established heart of Greenwood.



**Fraser's Landing**  
Mandurah, WA

A riverine community located in the City of Mandurah on the banks of the beautiful Serpentine River. Land now selling.





**Putney Hill**  
Ryde, NSW

A newly established community offering a limited collection of luxury homes and apartments in a peaceful neighbourhood with Lardelli Park at its heart.



**Tailor's Walk**  
Botany, NSW

Only 10km from Sydney CBD, Tailor's Walk is a new community tailor made for the Eastern Suburbs lifestyle. New terrace homes and apartments now selling.



**The Waterfront**  
Shell Cove, NSW

A beachside community with future marina and vibrant town centre, offering land and home options in a sought after South Coast location.



**Brookhaven**  
Bahrs Scrub, QLD

A sustainable well connected community located in the growth corridor between Brisbane and the Gold Coast. Offering residential land and turnkey house and land options.



**Coorparoo Square**  
Coorparoo, QLD

The new heart of Coorparoo offers a mix of vibrant retail along with apartments and penthouses that have exclusive use to extensive amenities.



**Found**  
Carlton, VIC

Located on the border of Carlton and Fitzroy, 2.5km from Melbourne CBD, Found is a boutique residential building, comprising 65 apartments and four exclusive townhouses inspired by the community and character of the precinct.



**Life, Point Cook**  
Point Cook, VIC

A vibrant new community in one of Victoria's fastest growing suburbs. Designed around a series of parks, reserves and wetlands with a range of living options to choose from.



**Mambourin**  
Mambourin, VIC

Mambourin, in Melbourne's thriving outer west, is a new kind of masterplanned community. Working with the brightest minds we're creating a better life for families who want city-like convenience, healthy living and great learning opportunities.



**Parkside**  
Parkville, VIC

Located in the premier suburb of Parkville only 4km's from Melbourne's CBD, Parkside provides convenient access to the city with decadent private residential facilities.



**Sunbury Fields**  
Sunbury, VIC

Love life in Sunbury. A diverse range of land lots now selling within a relaxed, natural environment.



**Jindowie**  
Yanchep, WA

Discover an established coastal community with nearby shops, local schools, golf course, beaches and lagoon. Land now selling.



**Port Coogee**  
North Coogee, WA

Western Australia's most exciting, multi-award winning coastal community and marina just 6km from the heart of Fremantle.



**Queens Riverside**  
East Perth, WA

A vibrant residential and mixed-use precinct at the forefront of East Perth's reinvention. Choose from a range of stylish apartments ready to move in now.



**Coast Papamoa Beach**  
Papamoa, Bay of Plenty, NZ

A beachside masterplanned community in one of New Zealand's most idyllic and lively locations, offering remarkably affordable coastal luxury. Land now selling.