



# THE BELMONT

*Apartments*  
3.13, 4.13, 5.13, 6.13, 7.13,  
8.13, 9.07, 10.06

1 1

UNIT AREAS

Internal ..... 54 m<sup>2</sup>  
Balcony ..... 8 m<sup>2</sup>

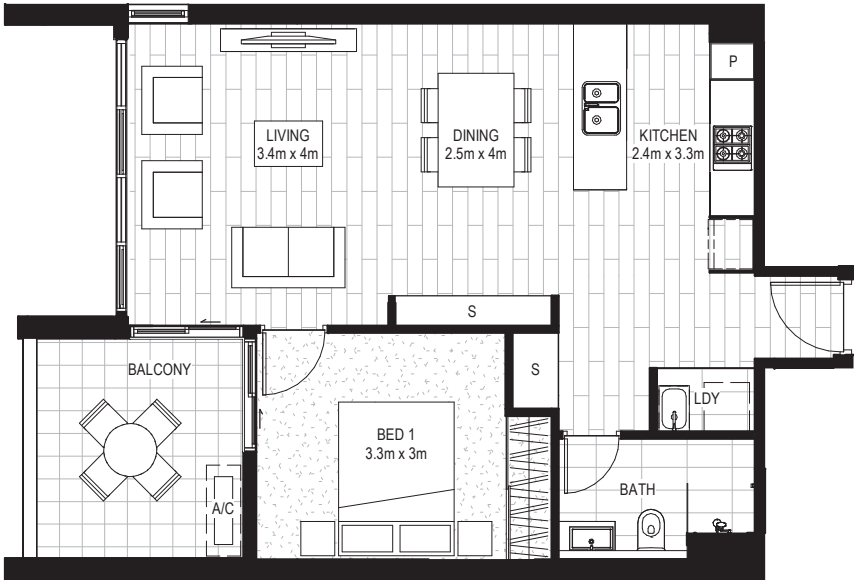
TOTAL AREAS ..... 62 m<sup>2</sup>



LEVEL 3, 4, 5,  
6, 7, 8, 9, 10

LEGEND

L - Linen  
S - Storage  
P - Pantry  
A/C - Condenser Unit  
SK - Skylight Over



Scale: 1:100

DISCLAIMER: This layout plan was produced prior to construction and is subject to DA approval. The dimensions and depictions of the layout of the apartment in this floor plan are approximations only, not to scale and may vary when the apartments are built. The landscaping design is to be used as a guide only and also may vary when built. If there are any discrepancies between the floor plans dimensions and depictions and the dimensions and depictions in the Strata Plan, the dimensions and depictions in the Strata Plan will prevail. All room measurements are measured from internal walls to internal walls and may vary. The furniture and furnishings depicted are not included with any sale and purchasers must refer to their contract for sale for the list of inclusions. The position of the furniture and furnishings should not be taken to be indicative of the final position of power points, TV connection points and the like. Prospective purchasers must rely on their own enquiries. April 2018.