



DISPLAY VILLAGE

4 2 2

BALLARAT 215



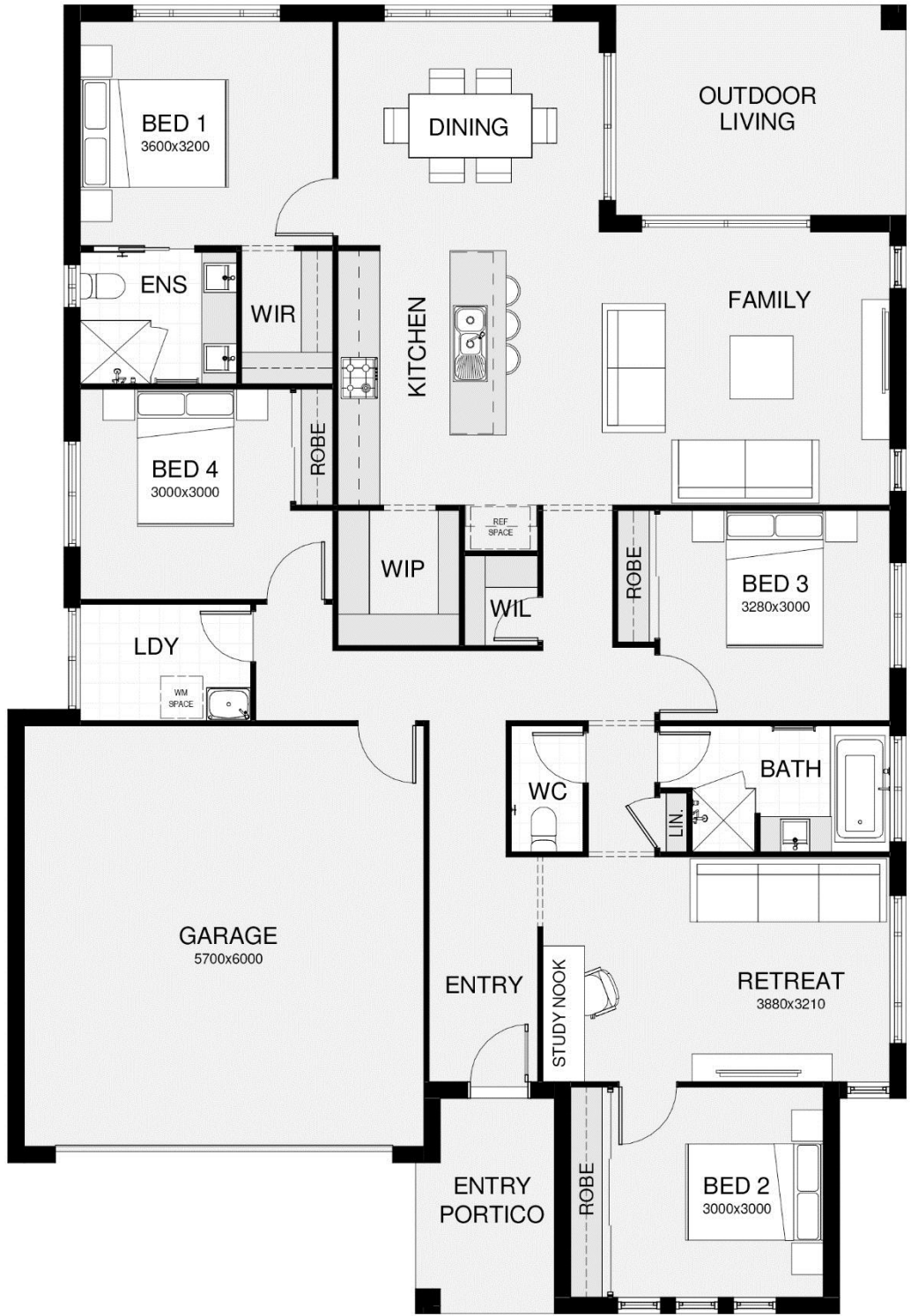
House Size	215.3m ²
Land Size	441m ²
Frontage	15m

DESCRIPTION

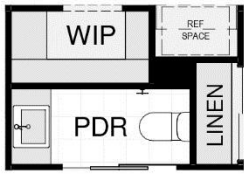
Welcome to the ideal four-bedroom family home. The Ballarat series offers features often only seen in larger homes including a separate study, three spacious living areas and a large walk in pantry. The roomy master suite is situated for ultimate privacy, offering a generous walk-in-robe and ensuite. The open plan living and modern kitchen link directly to the inviting outdoor entertaining space.



Terms and conditions apply. Subject to final confirmation of soil test and contour survey. Purchasers must enter into a construction contract separate to their land purchase contract. Information about the homes has been provided by the builders. The builder reserves the right to revise plans, specifications and prices without notice or obligation. Purchaser must confirm all inclusions with the builder's salesperson prior to deposit. Frasers is the developer and vendor of the land only and makes no representation about the homes, their construction or any inclusions. Purchasers must rely on their own contract with the builder. Pricing is correct as at time of printing. The price includes the land and the house as advertised, subject to any stated exclusions. The contract for the house is between the purchaser and the builder and the price may increase if the purchaser seeks variations. Lots also available on a land only basis. Landscaping, fences, retaining walls and decorator items excluded unless specified. House and Land Packages are subject to Design Review Panel and Council approval



OPTION 2
ALTERNATIVE WIP,
PWDR, LINEN LAYOUT



OVERALL LENGTH 18.650m
LENGTH WILL VARY DEPENDING ON FACADE TYPE

OVERALL WIDTH 12.800m

Terms and conditions apply. Subject to final confirmation of soil test and contour survey. Purchasers must enter into a construction contract separate to their land purchase contract. Information about the homes has been provided by the builders. The builder reserves the right to revise plans, specifications and prices without notice or obligation. Purchaser must confirm all inclusions with the builder's salesperson prior to deposit. Frasers is the developer and vendor of the land only and makes no representation about the homes, their construction or any inclusions. Purchasers must rely on their own contract with the builder. Pricing is correct as at time of printing. The price includes the land and the house as advertised, subject to any stated exclusions. The contract for the house is between the purchaser and the builder and the price may increase if the purchaser seeks variations. Lots also available on a land only basis. Landscaping, fences, retaining walls and decorator items excluded unless specified. House and Land Packages are subject to Design Review Panel and Council approval