

HOUSE & LAND

\$359,280

3  1  1 

ROBINA 129

INCLUSIONS

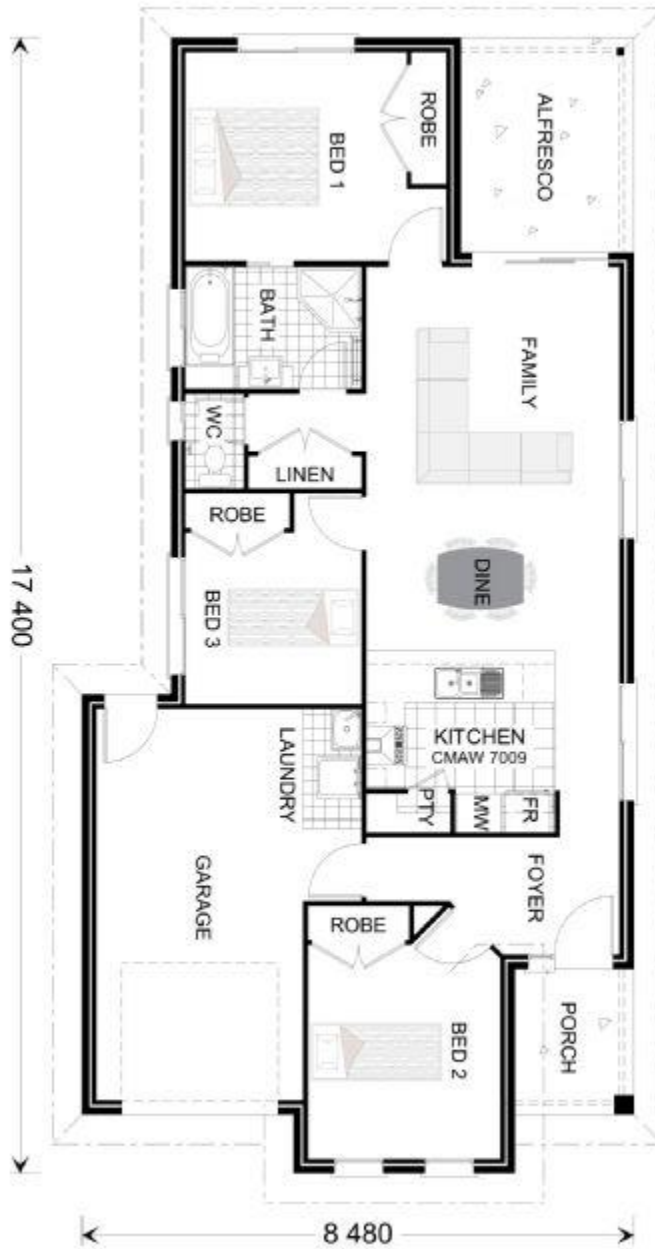
Lot 427	House Size	129m <sup>2</sup>
Hillside 1	Land Size	310m <sup>2</sup>
	Frontage	10m

- Large master suite with private entry to bathroom
- Custom Germancraft cabinetry with soft closing cupboards and draws
- Stainless steel appliances including dishwasher
- Exposed aggregate driveway, turf, fencing and landscaping
- Air-conditioning to master bedroom and living
- Flyscreens and blinds to all windows
- Security screens included
- Clothesline, letterbox and antenna included

**G.J. Gardner.** HOMES



Terms and conditions apply. Subject to final confirmation of soil test and contour survey. Purchasers must enter into a construction contract separate to their land purchase contract. Information about the homes has been provided by the builders. The builder reserves the right to revise plans, specifications and prices without notice or obligation. Purchaser must confirm all inclusions with the builder's salesperson prior to deposit. Frasers is the developer and vendor of the land only and makes no representation about the homes, their construction or any inclusions. Purchasers must rely on their own contract with the builder. Pricing is correct as at time of printing. The price includes the land and the house as advertised, subject to any stated exclusions. The contract for the house is between the purchaser and the builder and the price may increase if the purchaser seeks variations. Lots also available on a land only basis. Landscaping, fences, retaining walls and decorator items excluded unless specified. House and Land Packages are subject to Design Review Panel and Council approval



Terms and conditions apply. Subject to final confirmation of soil test and contour survey. Purchasers must enter into a construction contract separate to their land purchase contract. Information about the homes has been provided by the builders. The builder reserves the right to revise plans, specifications and prices without notice or obligation. Purchaser must confirm all inclusions with the builder's salesperson prior to deposit. Frasers is the developer and vendor of the land only and makes no representation about the homes, their construction or any inclusions. Purchasers must rely on their own contract with the builder. Pricing is correct as at time of printing. The price includes the land and the house as advertised, subject to any stated exclusions. The contract for the house is between the purchaser and the builder and the price may increase if the purchaser seeks variations. Lots also available on a land only basis. Landscaping, fences, retaining walls and decorator items excluded unless specified. House and Land Packages are subject to Design Review Panel and Council approval